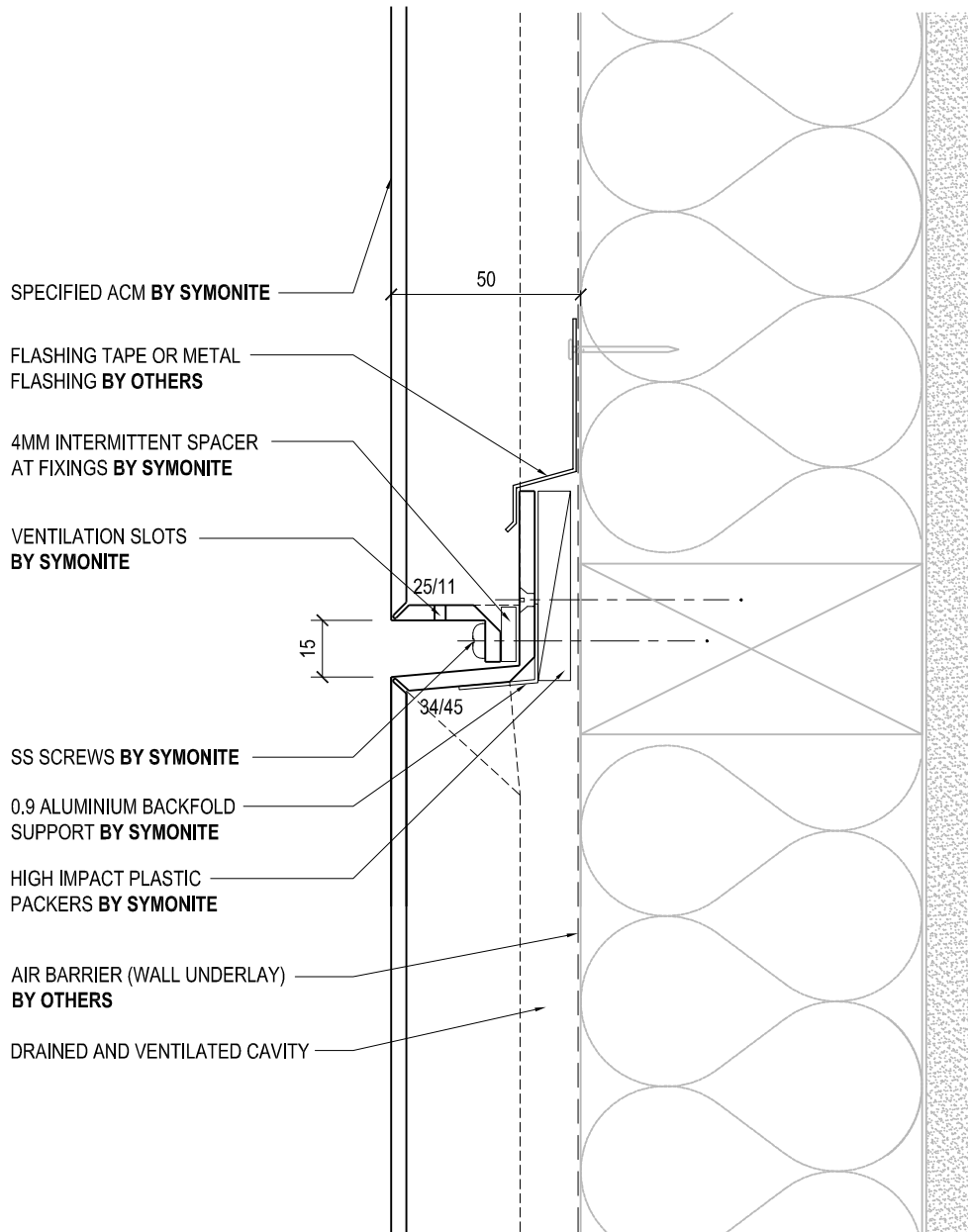


ROUT AND RETURN SYSTEM



NOTE

- OPEN DRAINAGE JOINT IS ONLY REQUIRED ON HIGHRISE BUILDINGS AT EVERY SECOND FLOOR LEVEL. FOR BUILDINGS WHERE THE ACM WALL SPANS OVER MORE THAN 3 STOREYS HIGH

SYMONITE	<small>DRAWING TITLE</small>	<small>DRAWING STATUS</small>		
	15mm OPEN JOINT DETAIL	ARCHITECTURAL RESOURCE	<small>SHEET NO.</small> 03	<small>ISSUE</small> A
		<small>SCALE: 1:2</small>	<small>DATE: DECEMBER 2014</small>	