

AIR BARRIER (WALL UNDERLAY) **BY OTHERS**

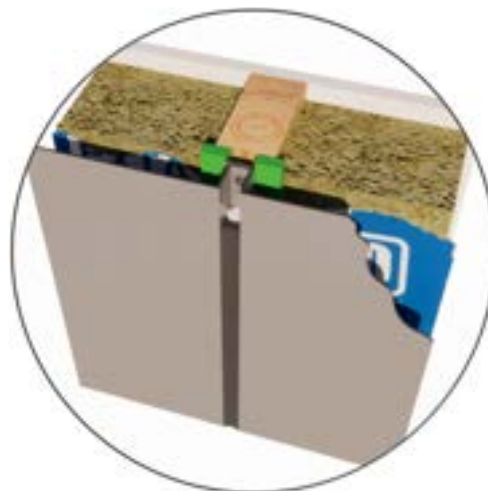
HIGH IMPACT PACKERS **BY FABRICATOR**  
(INDEPENDENTLY FIXED WHEN MORE THAN 2 PACKERS ARE USED)

SEALANT ON PEF ROD **BY FABRICATOR**

DRAINED AND VENTILATED CAVITY

2mm ALUCODUAL CLADDING **BY THE BUILDING AGENCY**

SS SCREW **BY FABRICATOR**



**NOTE**

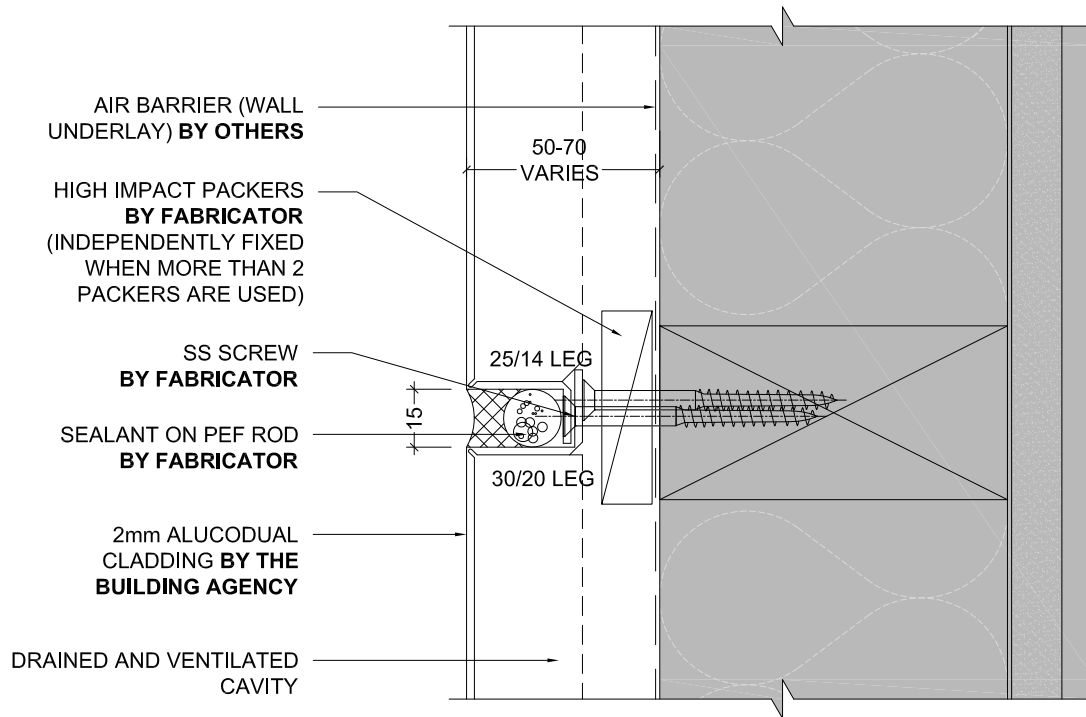
TIMBER FRAMING BY OTHERS TO BE AT 600 CTRS MAX FOR BOTH STUDS & NOGS. MAY BE REQUIRED AT CLOSER CENTERS SUBJECT TO ENGINEERING REQUIREMENTS

## VERTICAL JOINT

Detail Number \_\_\_\_\_  
Version \_\_\_\_\_  
[v1.0]



MATERIALS • SYSTEMS • SOLUTIONS



**NOTE**

TIMBER FRAMING BY OTHERS TO BE AT 600 CTRS MAX FOR BOTH STUDS & NOGS. MAY BE REQUIRED AT CLOSER CENTERS SUBJECT TO ENGINEERING REQUIREMENTS

## HORIZONTAL JOINT

Detail Number \_\_\_\_\_

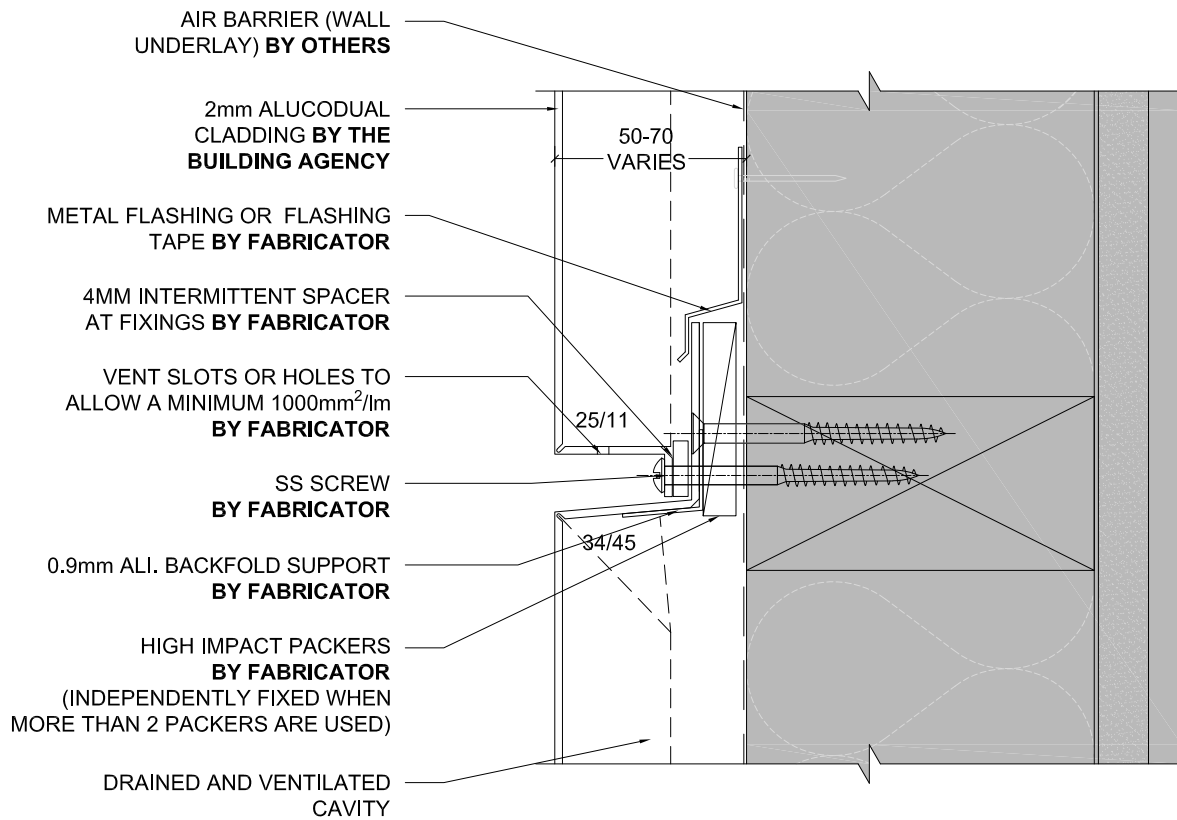
Version \_\_\_\_\_

2.0

[v1.0]



MATERIALS • SYSTEMS • SOLUTIONS



**NOTE**  
TIMBER FRAMING BY OTHERS TO BE AT 600 CTRS MAX FOR BOTH STUDS & NOGS. MAY BE REQUIRED AT CLOSER CENTERS SUBJECT TO ENGINEERING REQUIREMENTS

**NOTE**  
OPEN DRAINAGE JOINT IS ONLY REQUIRED ON HIGHRISE BUILDINGS AT EVERY SECOND FLOOR LEVEL.  
FOR BUILDINGS WHERE THE ACP WALL SPANS OVER MORE THAN 3 STOREYS HIGH.

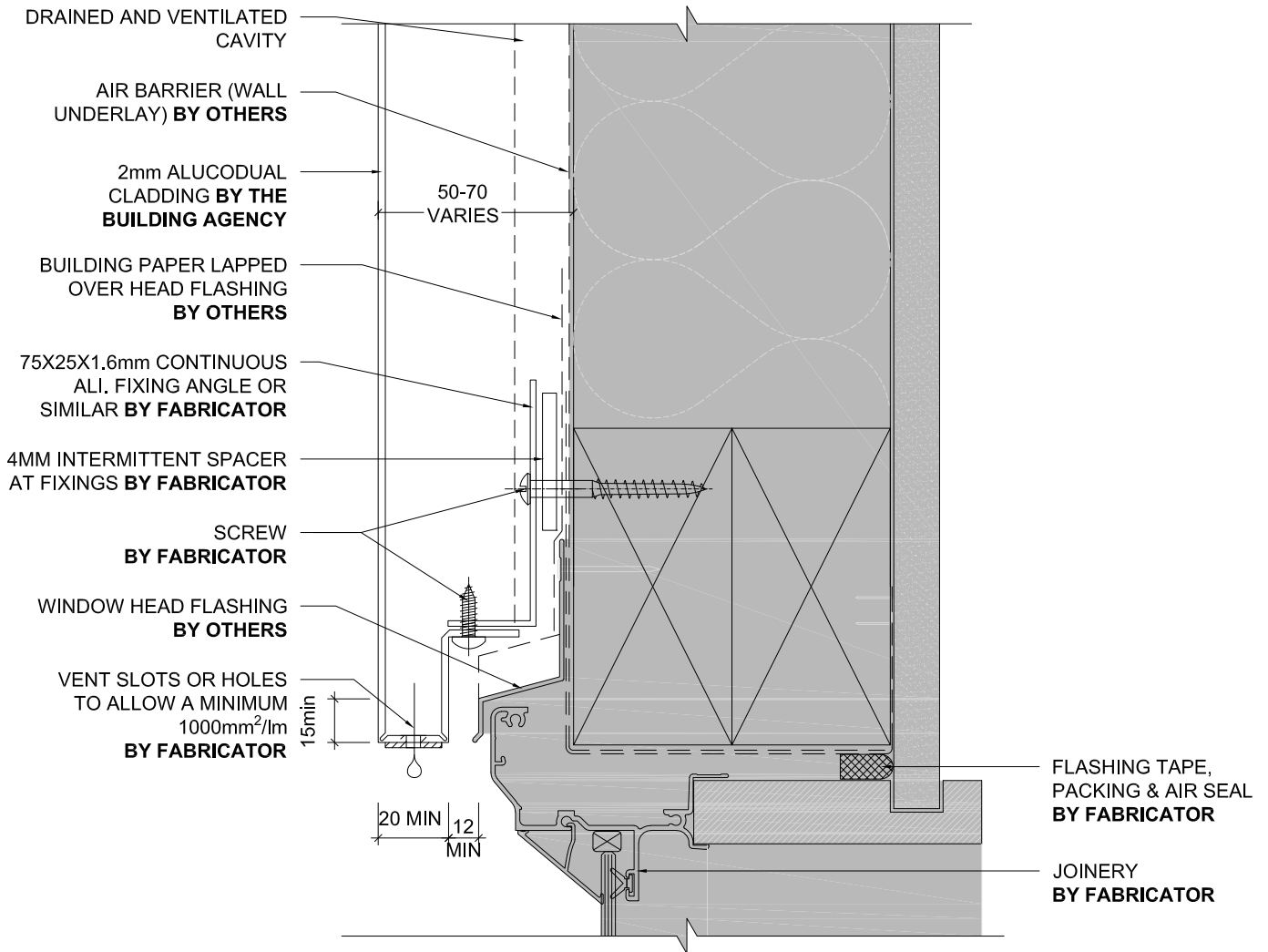


## 15MM HORIZONTAL OPEN JOINT

Detail Number \_\_\_\_\_  
Version \_\_\_\_\_  
[v1.0]



MATERIALS • SYSTEMS • SOLUTIONS



## WINDOW HEAD RESIDENTIAL JOINERY

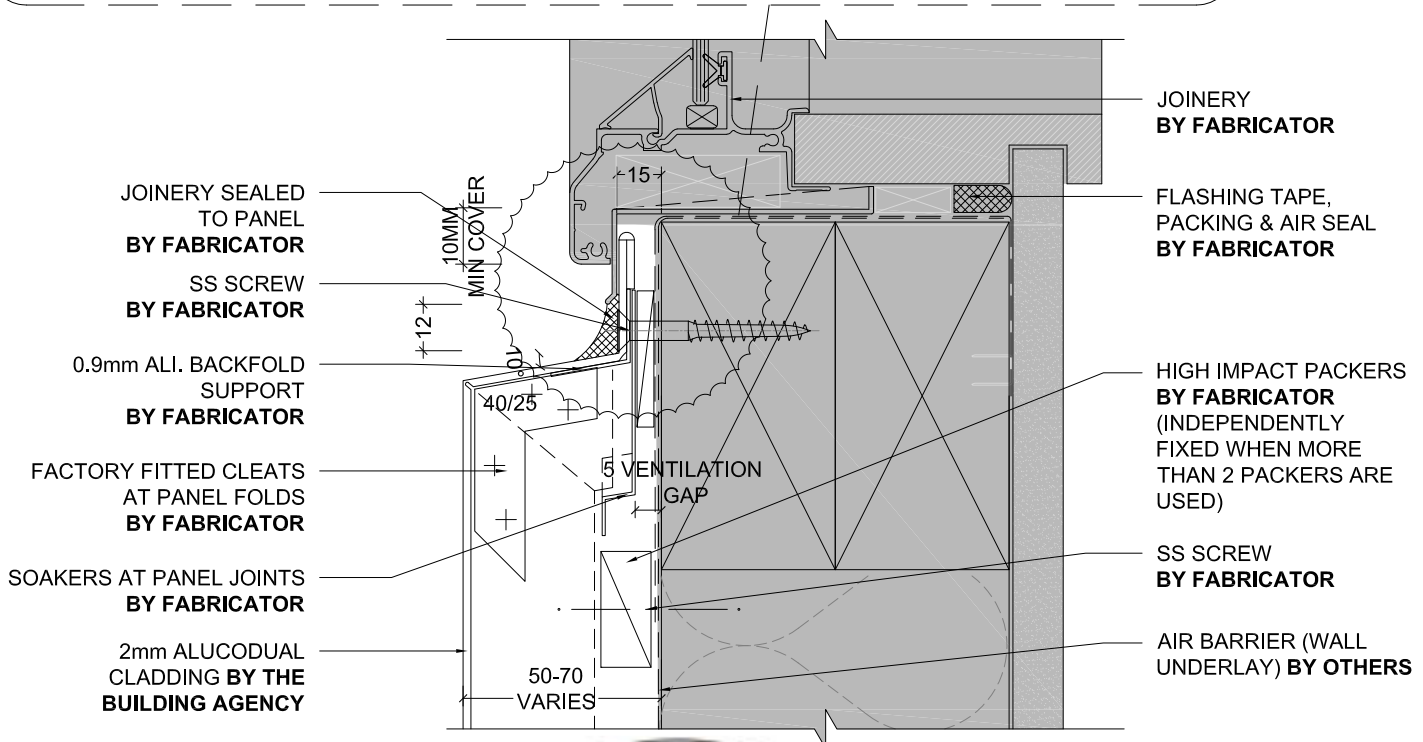
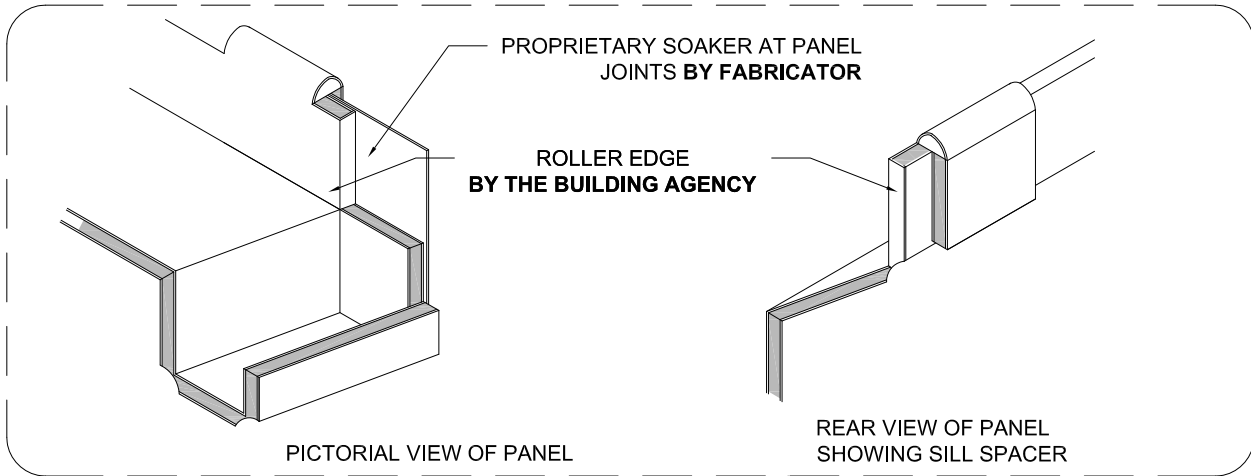
Detail Number \_\_\_\_\_  
 Version \_\_\_\_\_  
 3.1.0  
 [v1.0]



MATERIALS • SYSTEMS • SOLUTIONS

# ALUCODUAL

R&R SYSTEM

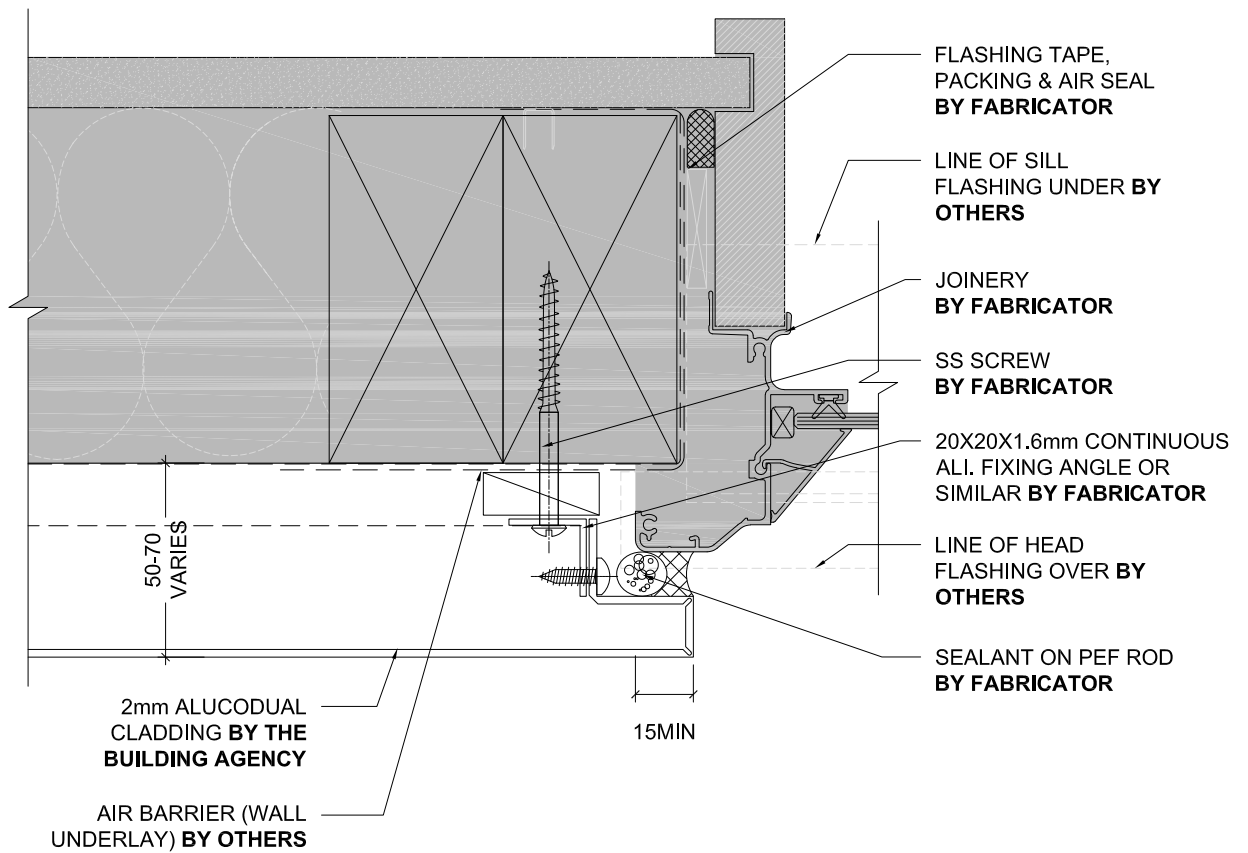


## WINDOW SILL RESIDENTIAL JOINERY

Detail Number \_\_\_\_\_  
Version \_\_\_\_\_  
[v1.0]



MATERIALS • SYSTEMS • SOLUTIONS

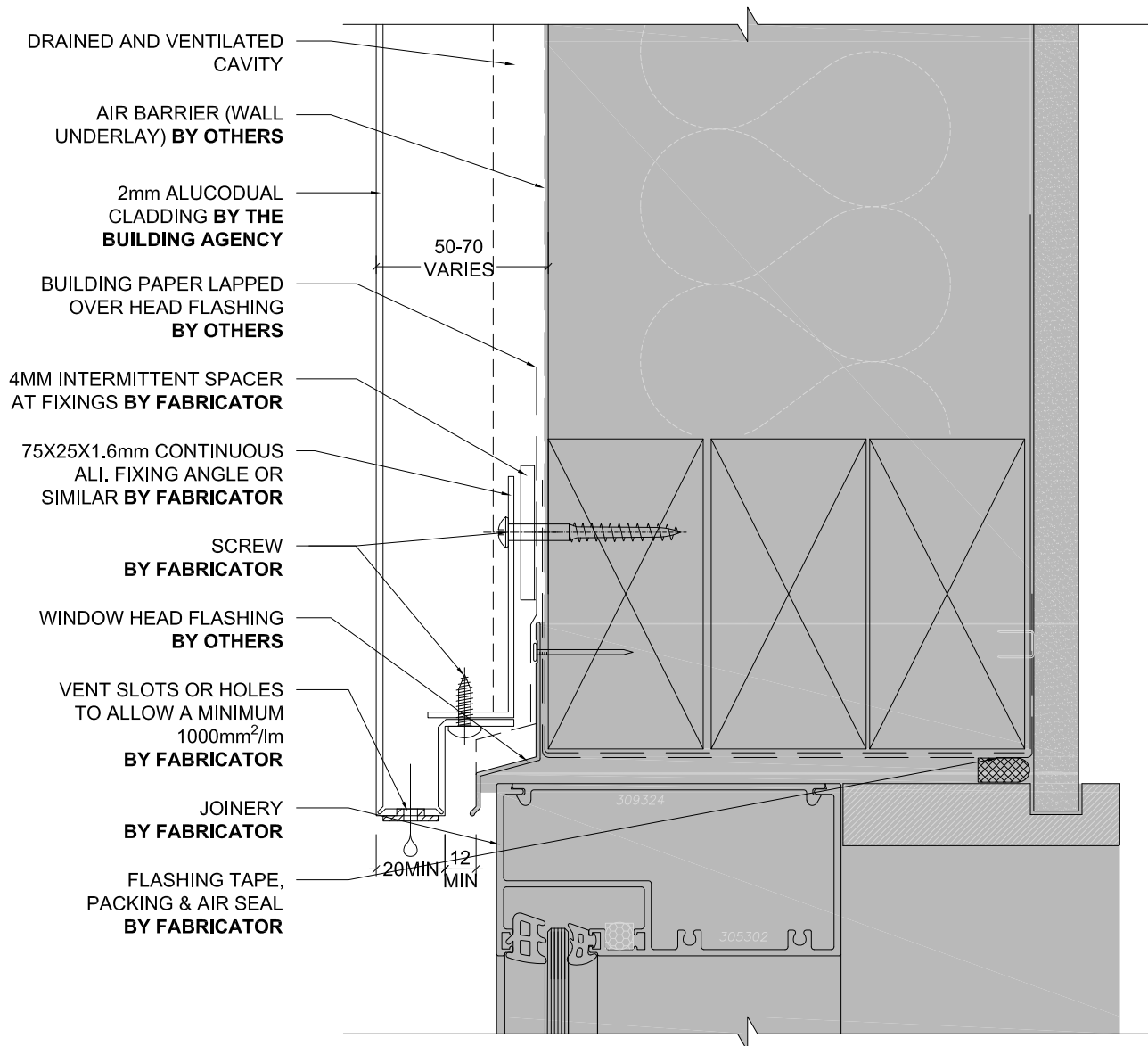


## WINDOW JAMB RESIDENTIAL JOINERY

Detail Number \_\_\_\_\_  
Version \_\_\_\_\_  
3.1.2  
[v1.0]



MATERIALS • SYSTEMS • SOLUTIONS



## WINDOW HEAD COMMERCIAL JOINERY

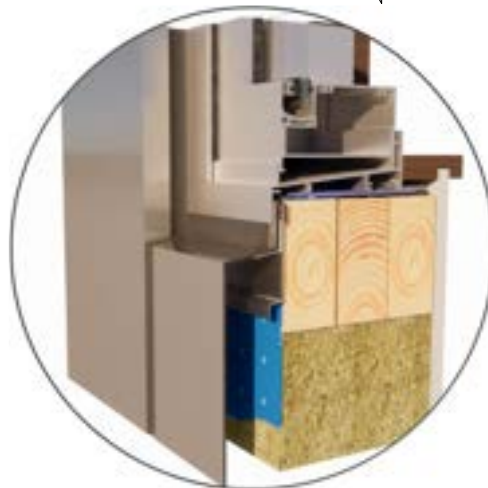
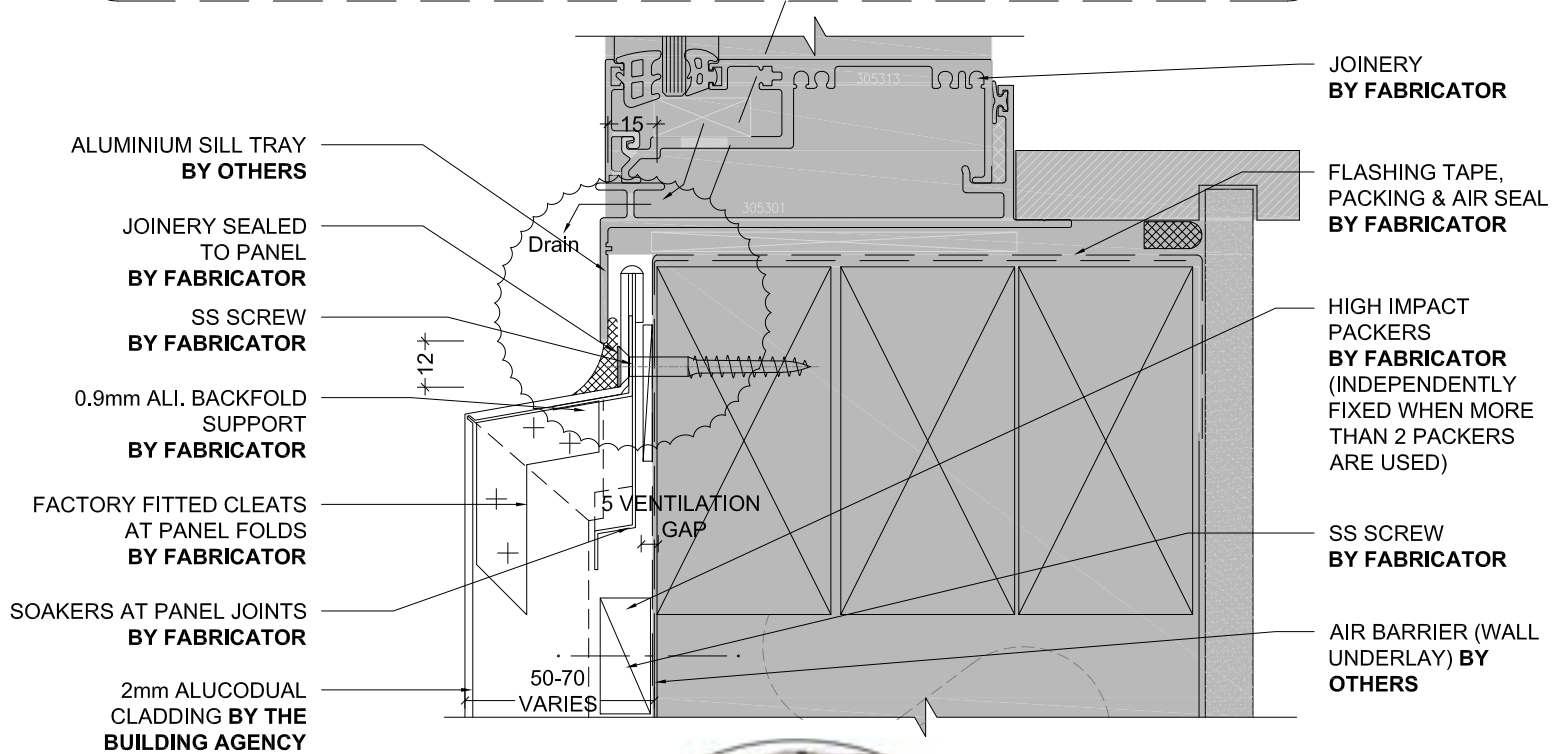
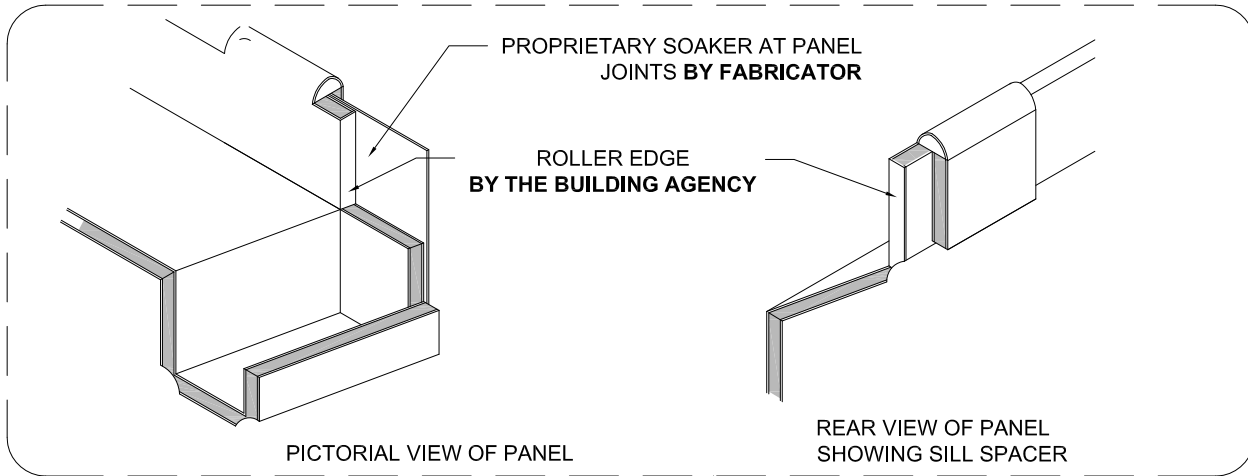
Detail Number \_\_\_\_\_  
 Version \_\_\_\_\_  
 [v1.0]



MATERIALS • SYSTEMS • SOLUTIONS

# ALUCODUAL

R&R SYSTEM



## WINDOW SILL COMMERCIAL JOINERY

Detail Number \_\_\_\_\_  
Version \_\_\_\_\_

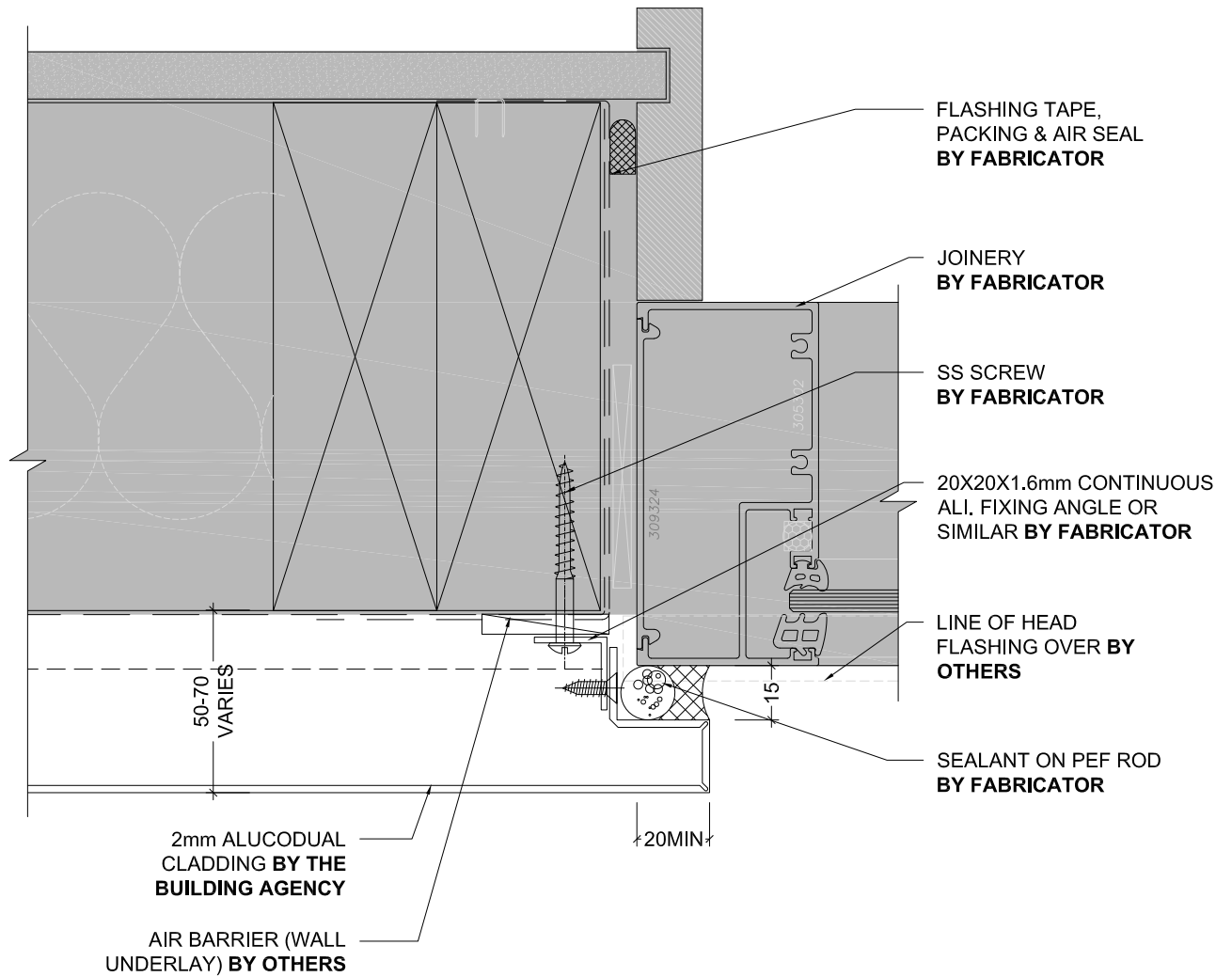
3.2.1

[v1.0]



MATERIALS • SYSTEMS • SOLUTIONS



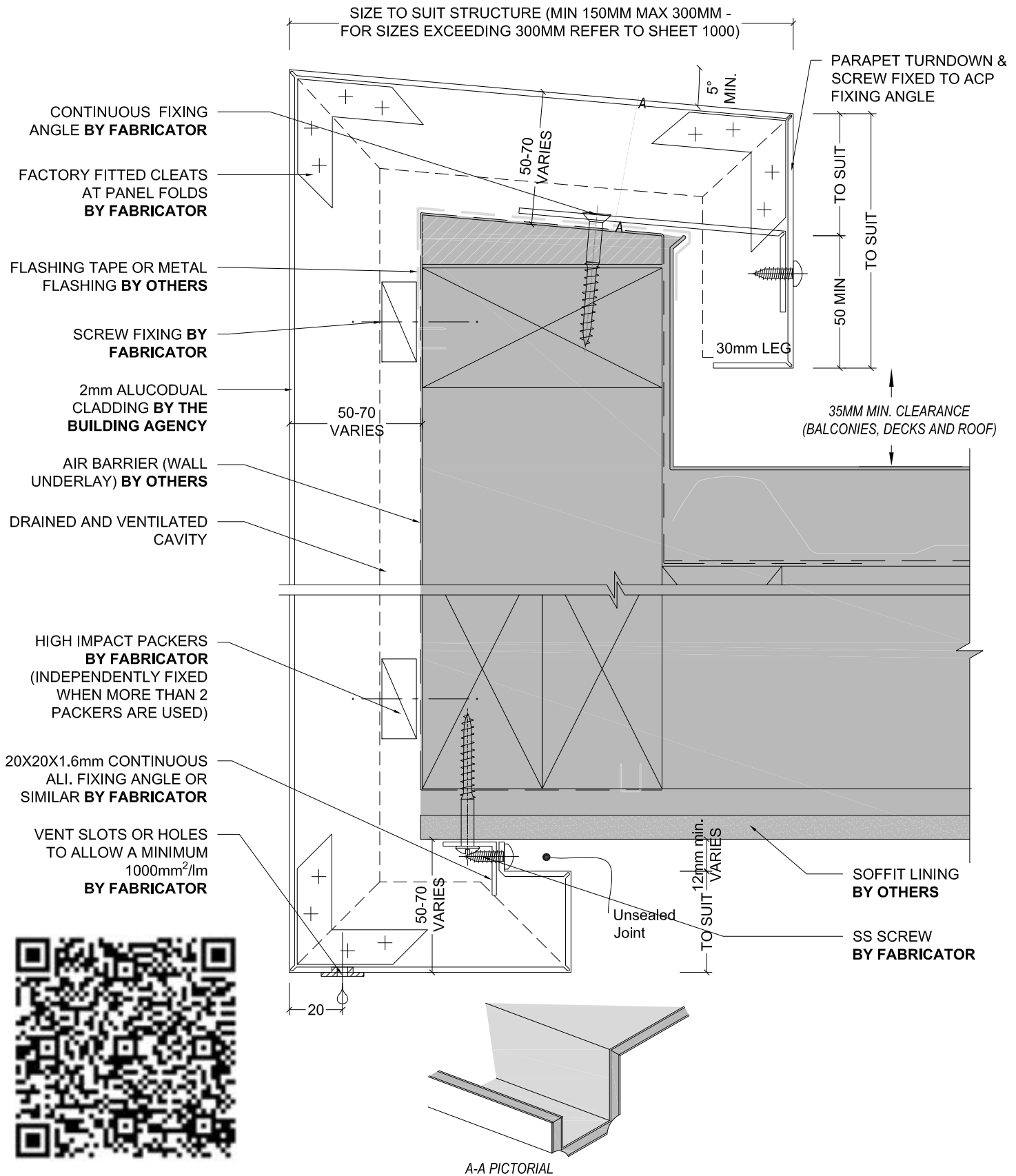


## WINDOW JAMB COMMERCIAL JOINERY

Detail Number \_\_\_\_\_  
Version \_\_\_\_\_  
3.2.2  
[v1.0]



MATERIALS • SYSTEMS • SOLUTIONS



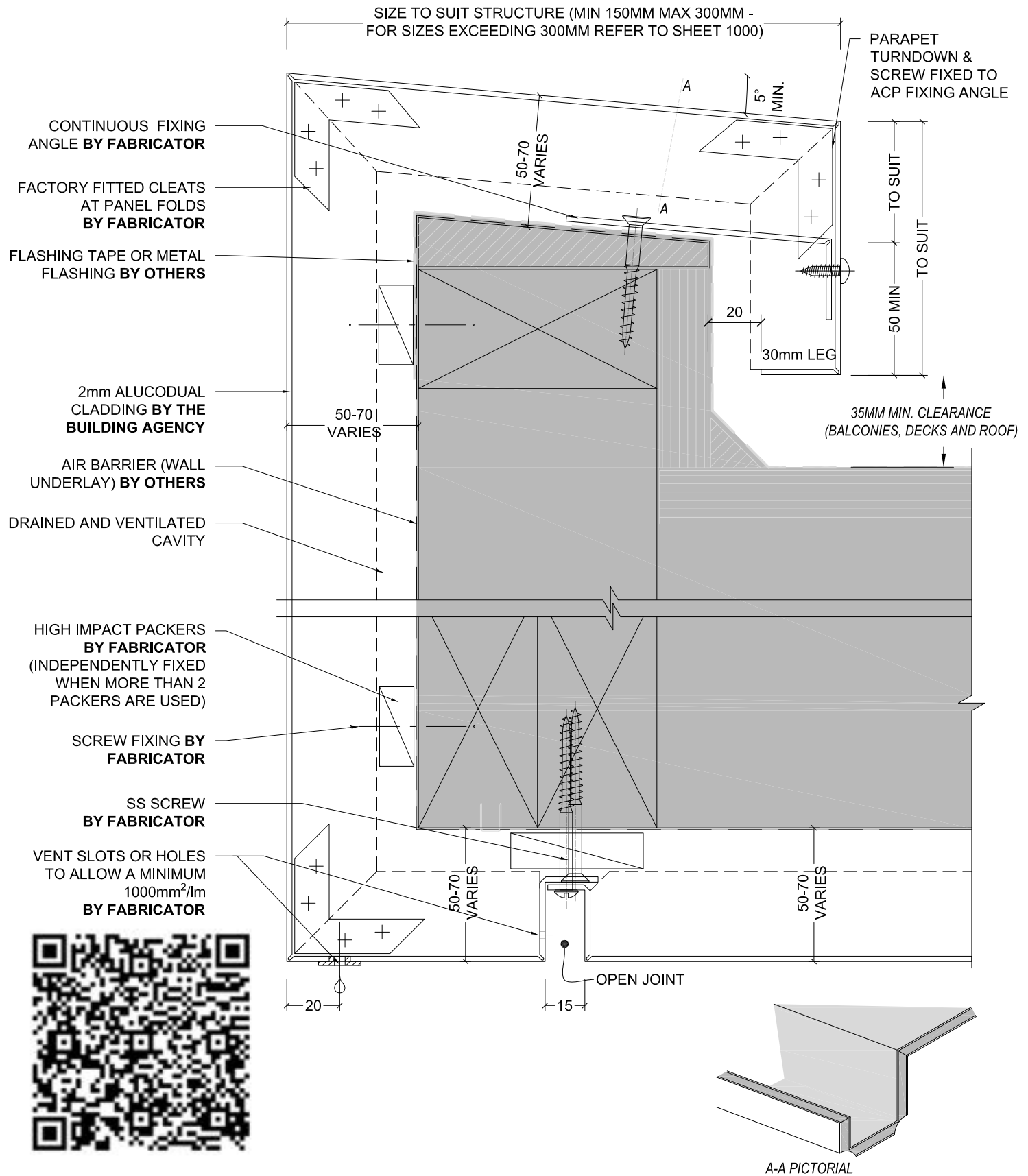
## FASCIA DETAIL SOFFIT BY OTHERS

Detail Number \_\_\_\_\_

4.0

Version \_\_\_\_\_

[v1.0]



## FASCIA & SOFFIT DETAIL

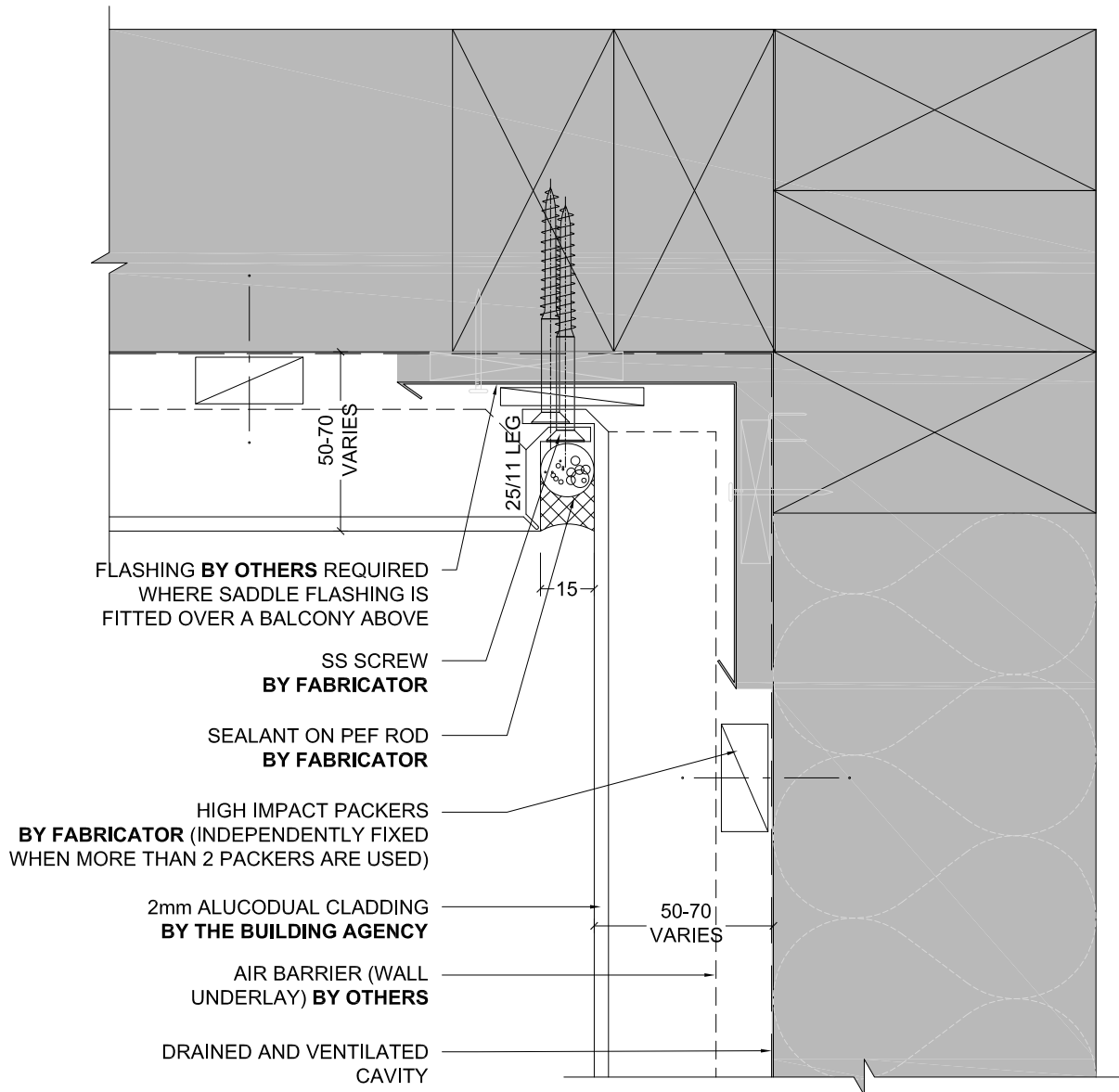
Detail Number \_\_\_\_\_

Version \_\_\_\_\_

4.1

[v1.0]



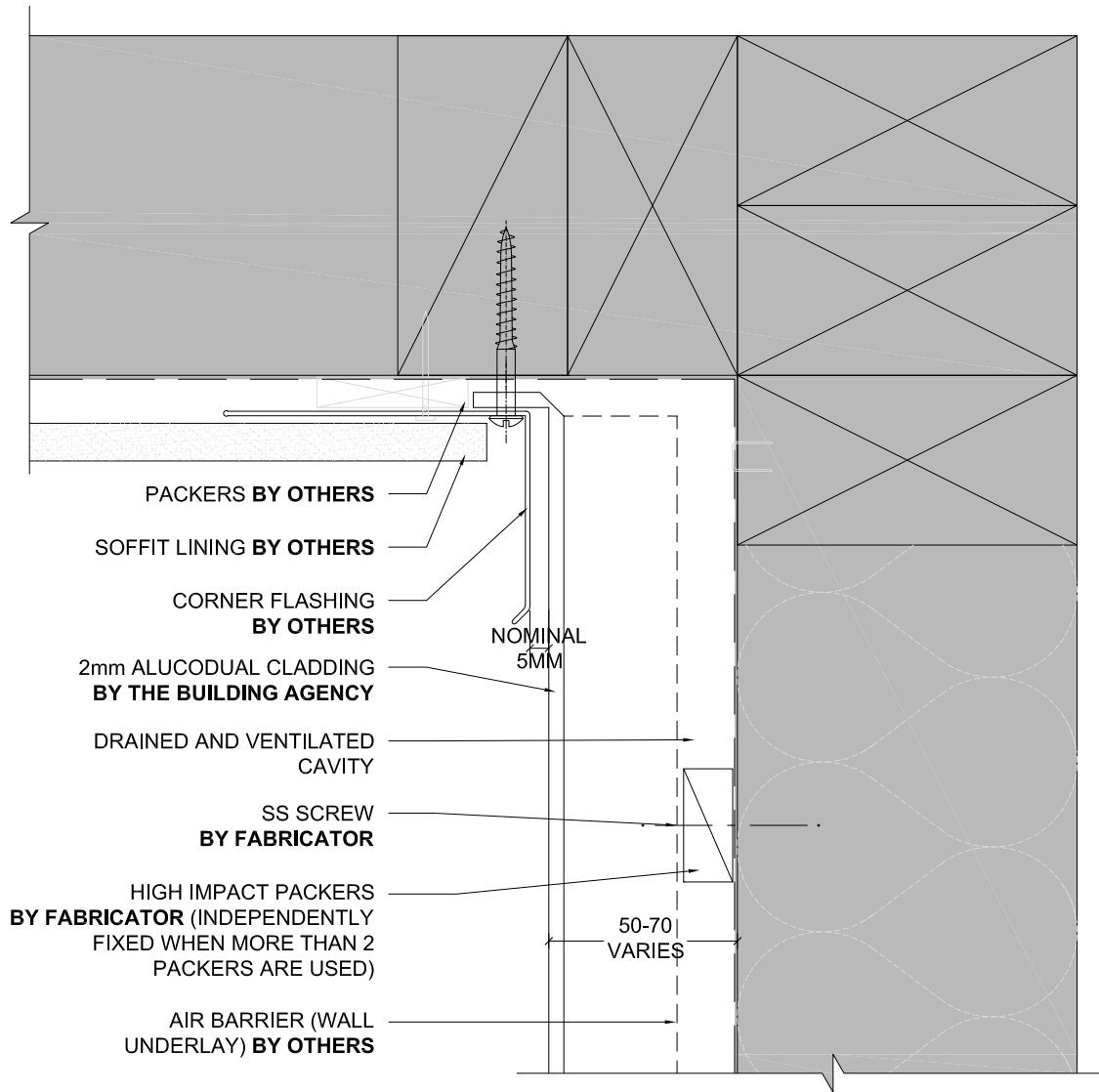


## SOFFIT / WALL JUNCTION OP 1

Detail Number \_\_\_\_\_  
Version \_\_\_\_\_  
[v1.0]



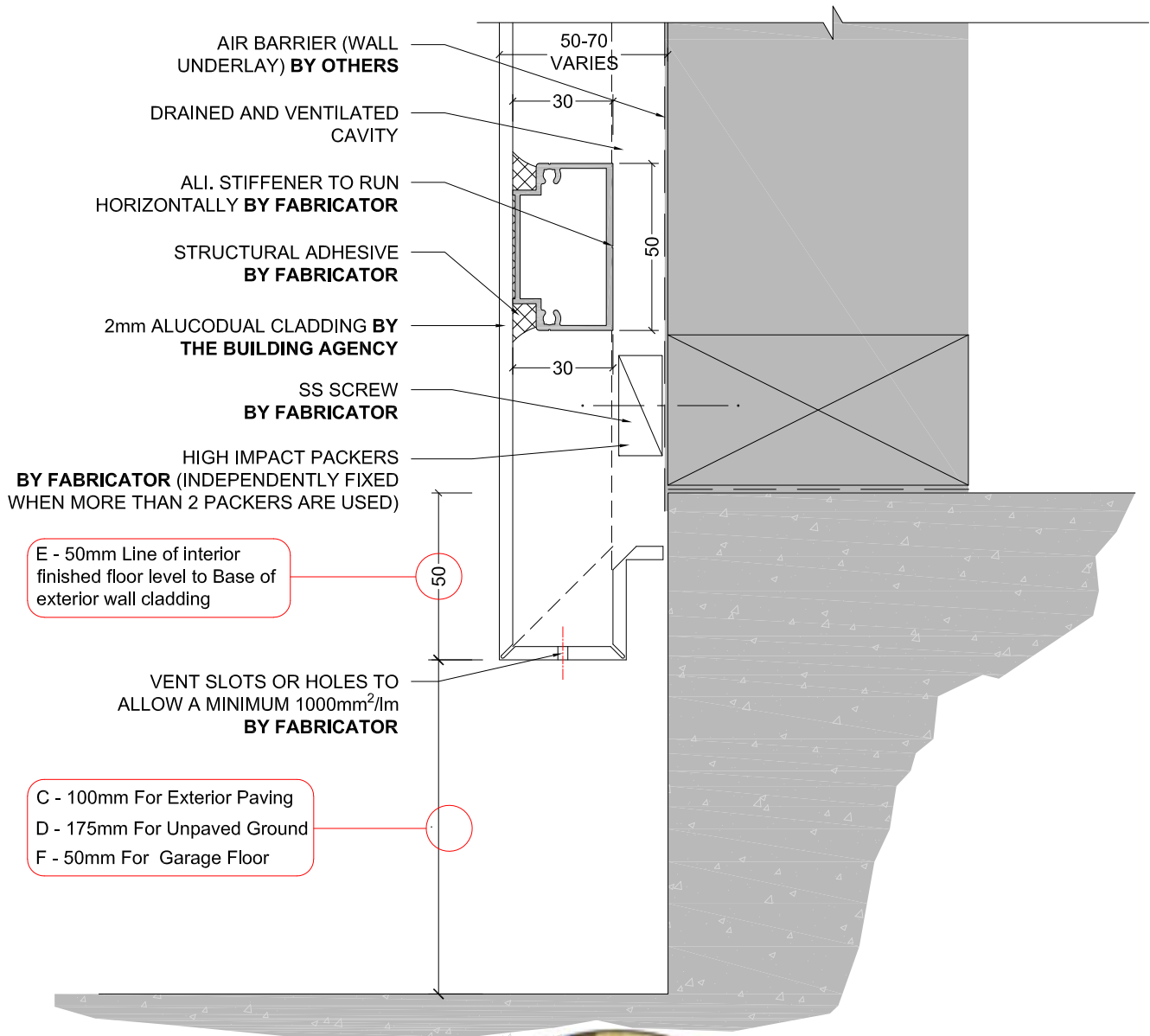
MATERIALS • SYSTEMS • SOLUTIONS



## SOFFIT / WALL JUNCTION OP 2

Detail Number \_\_\_\_\_  
4.2.1  
Version \_\_\_\_\_  
[v1.0]





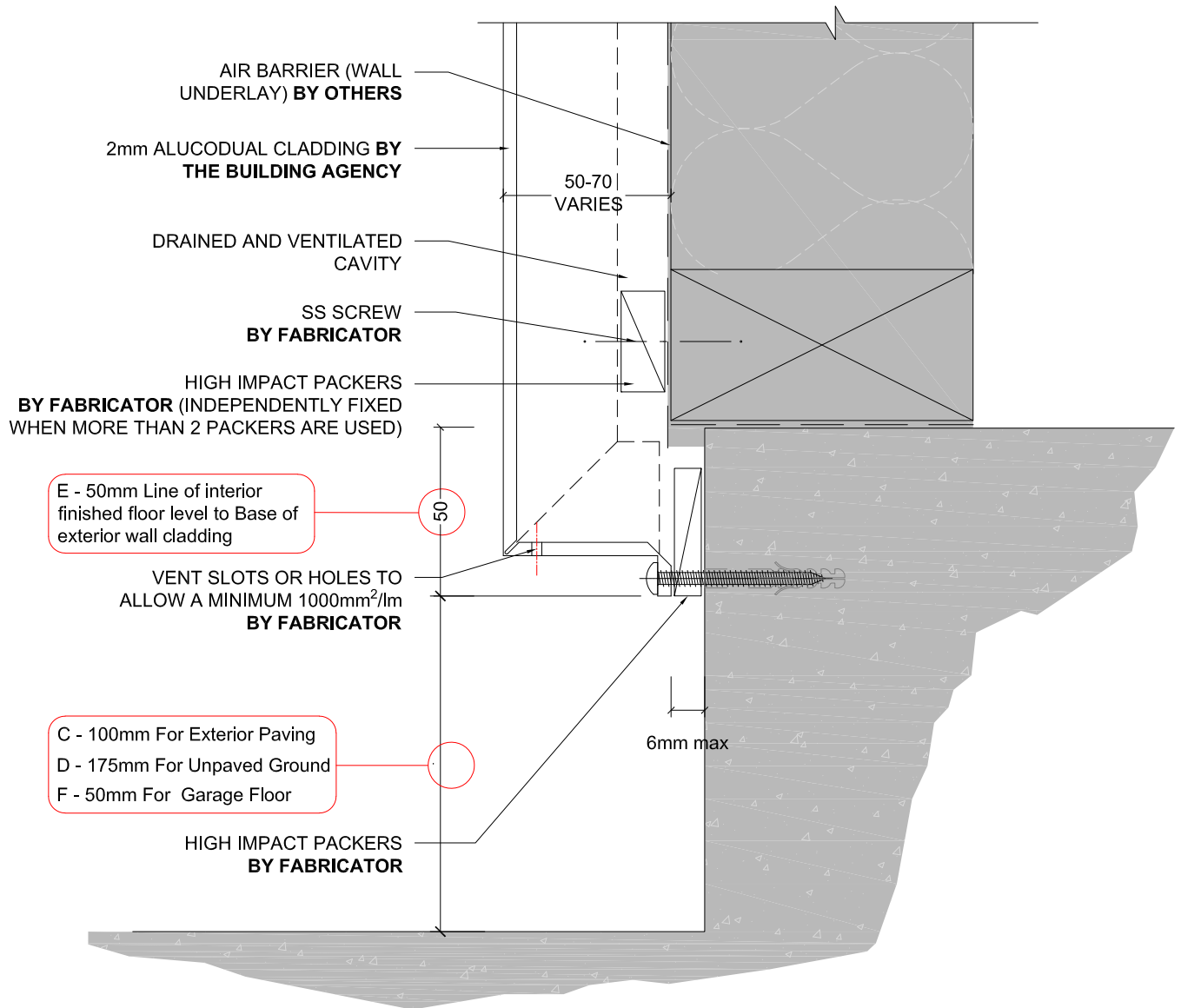
## BASE DETAIL OP 1

Detail Number \_\_\_\_\_  
Version \_\_\_\_\_  
4.3.0  
[v1.0]



MATERIALS • SYSTEMS • SOLUTIONS



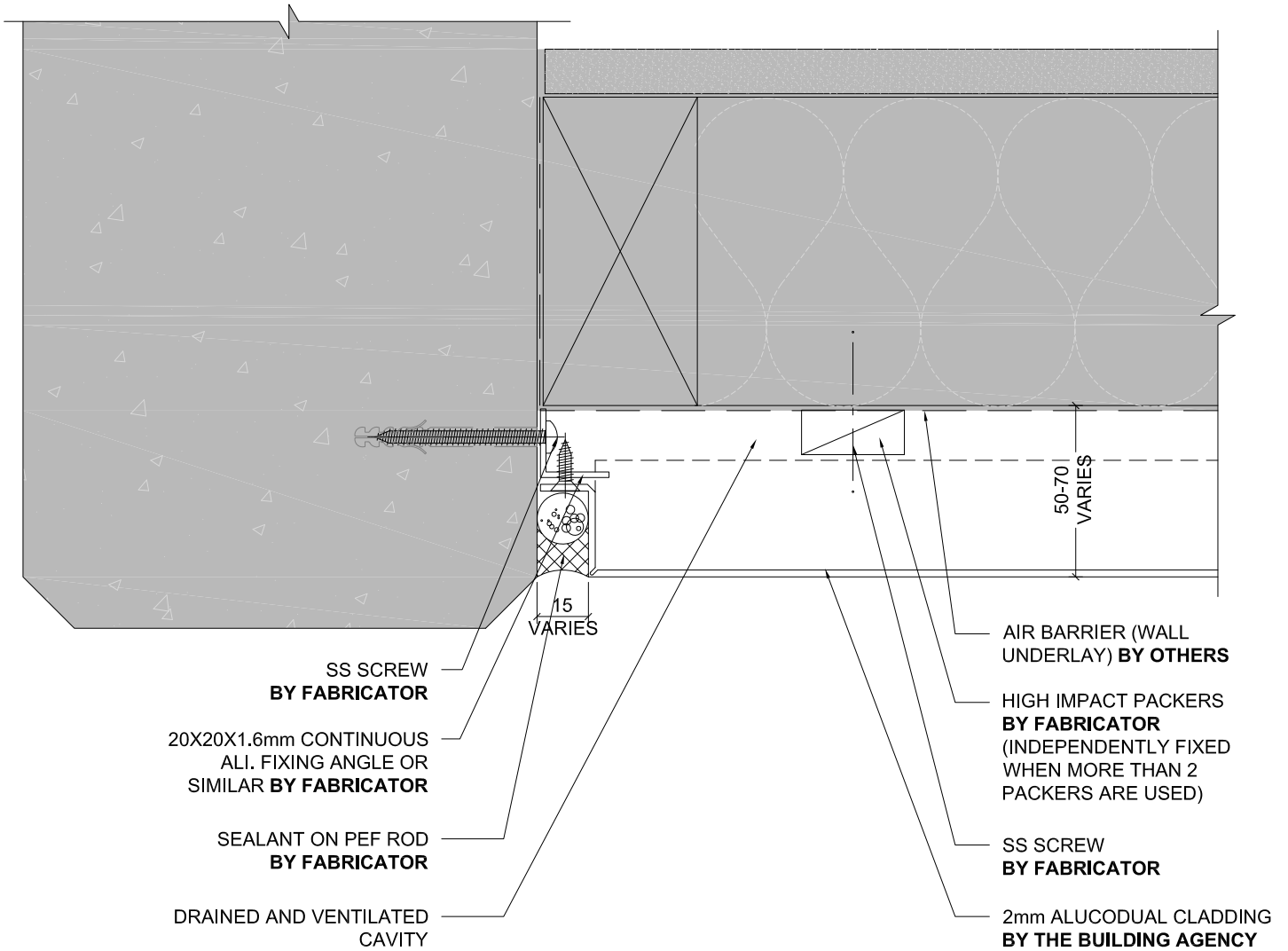


## BASE DETAIL OP 2

Detail Number \_\_\_\_\_  
Version \_\_\_\_\_  
4.3.1  
[v1.0]



MATERIALS • SYSTEMS • SOLUTIONS



## PRECAST JUNCTION DETAIL OP 1

Detail Number \_\_\_\_\_  
Version \_\_\_\_\_  
[v1.0]



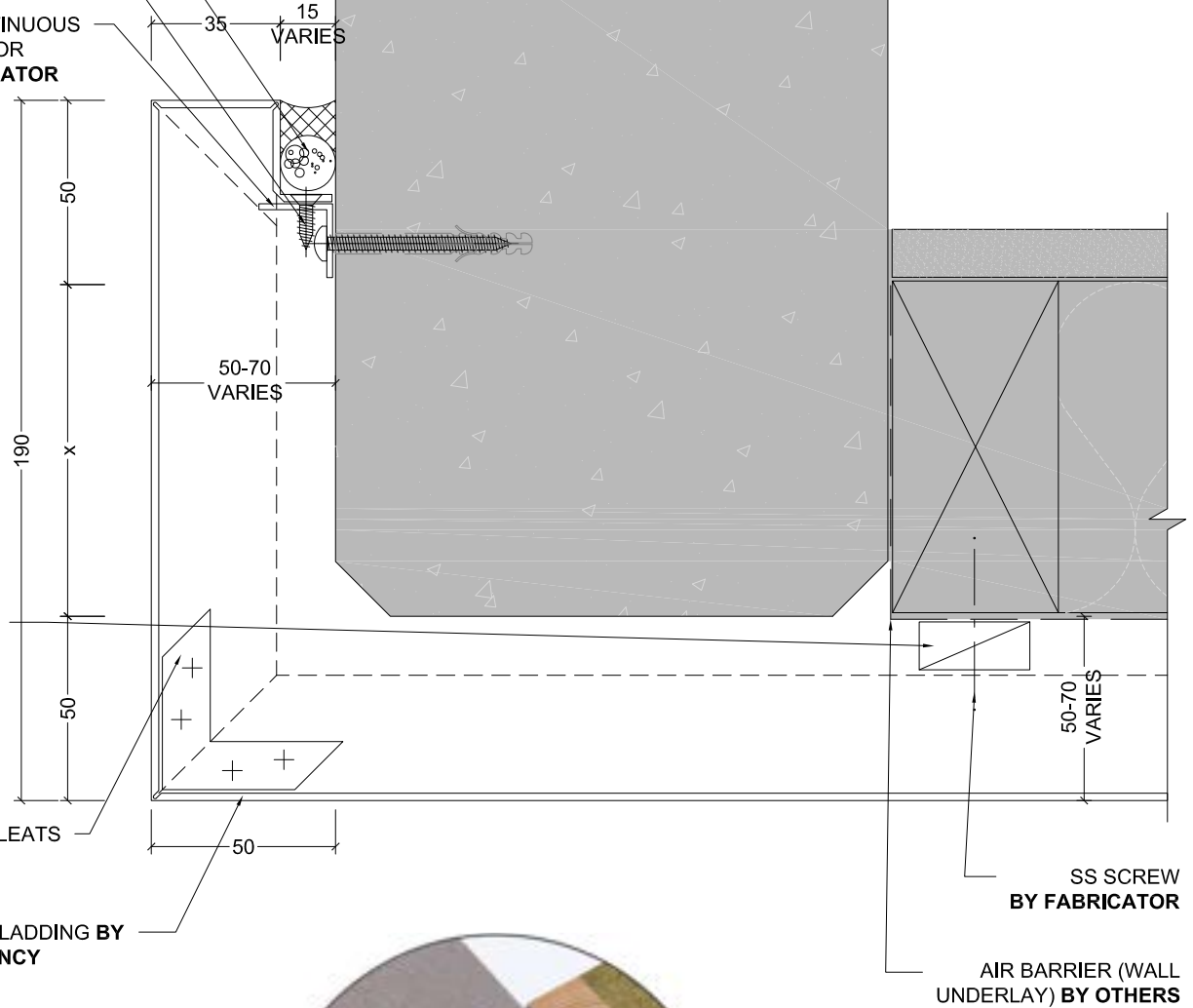
# ALUCODUAL

R&R SYSTEM

SEALANT ON PEF ROD  
BY FABRICATOR

SS SCREW  
BY FABRICATOR

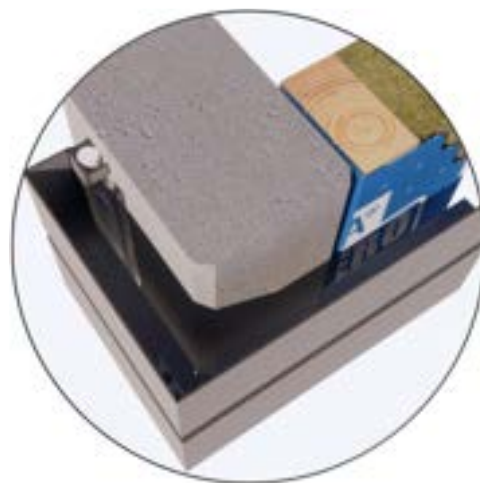
20X20X1.6mm CONTINUOUS  
ALI. FIXING ANGLE OR  
SIMILAR BY FABRICATOR



HIGH IMPACT  
PACKERS  
BY FABRICATOR  
(INDEPENDENTLY  
FIXED WHEN MORE  
THAN 2 PACKERS  
ARE USED)

FACTORY FITTED CLEATS  
AT PANEL FOLDS  
BY FABRICATOR

2mm ALUCODUAL CLADDING BY  
THE BUILDING AGENCY



## PRECAST JUNCTION DETAIL OP 2

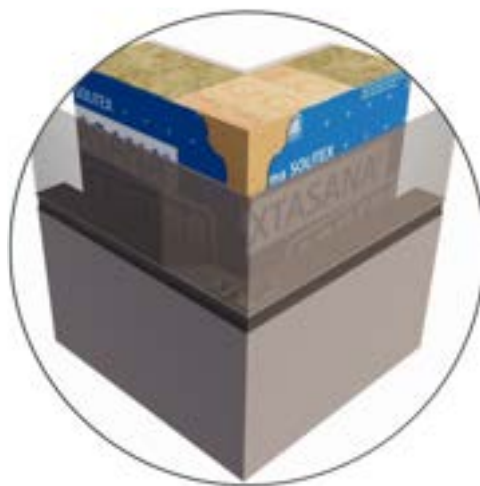
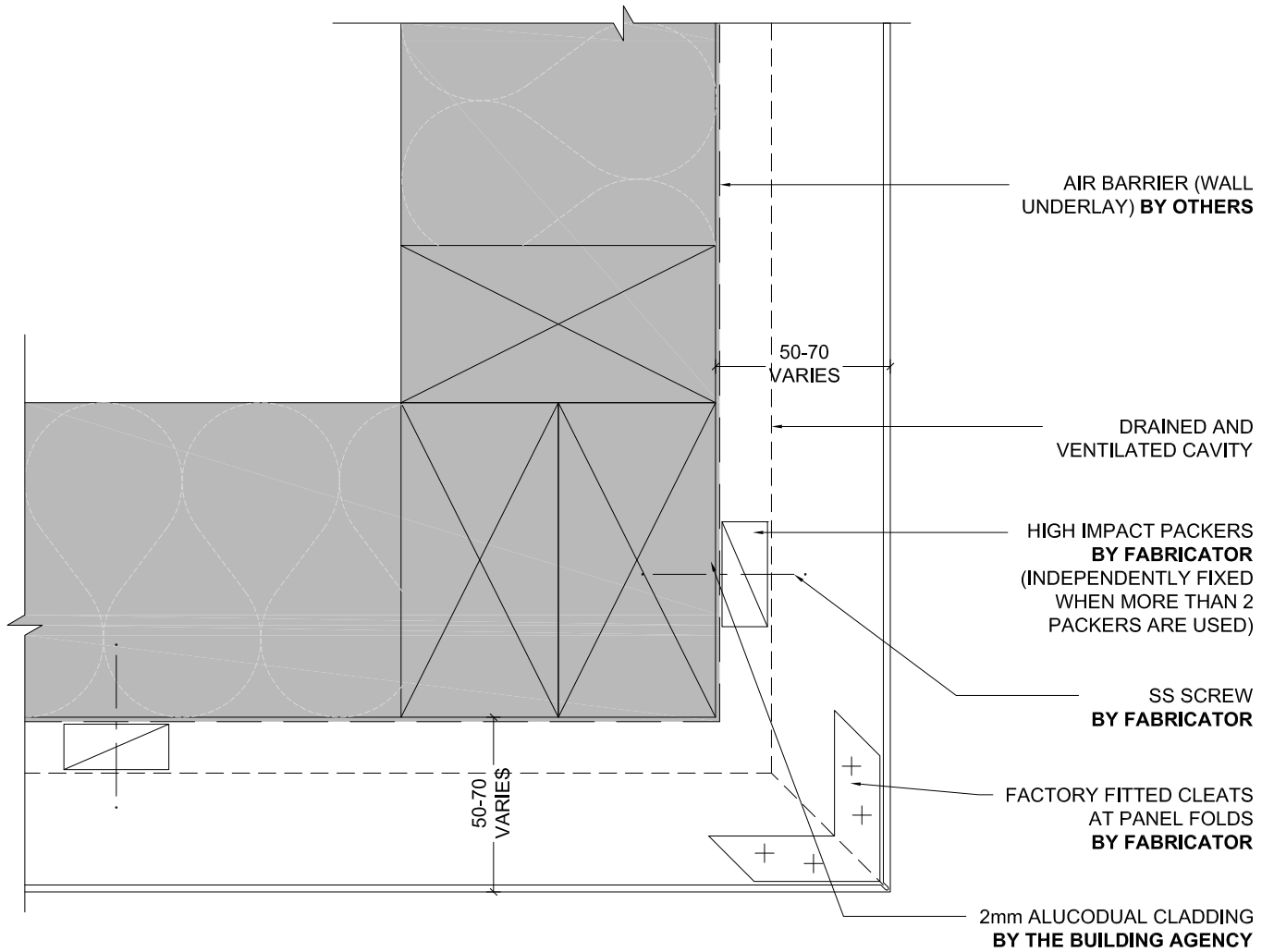
Detail Number \_\_\_\_\_  
Version \_\_\_\_\_  
[v1.0]



MATERIALS • SYSTEMS • SOLUTIONS

# ALUCODUAL

R&R SYSTEM



EXTERNAL  
CORNER

Detail Number \_\_\_\_\_  
6.0

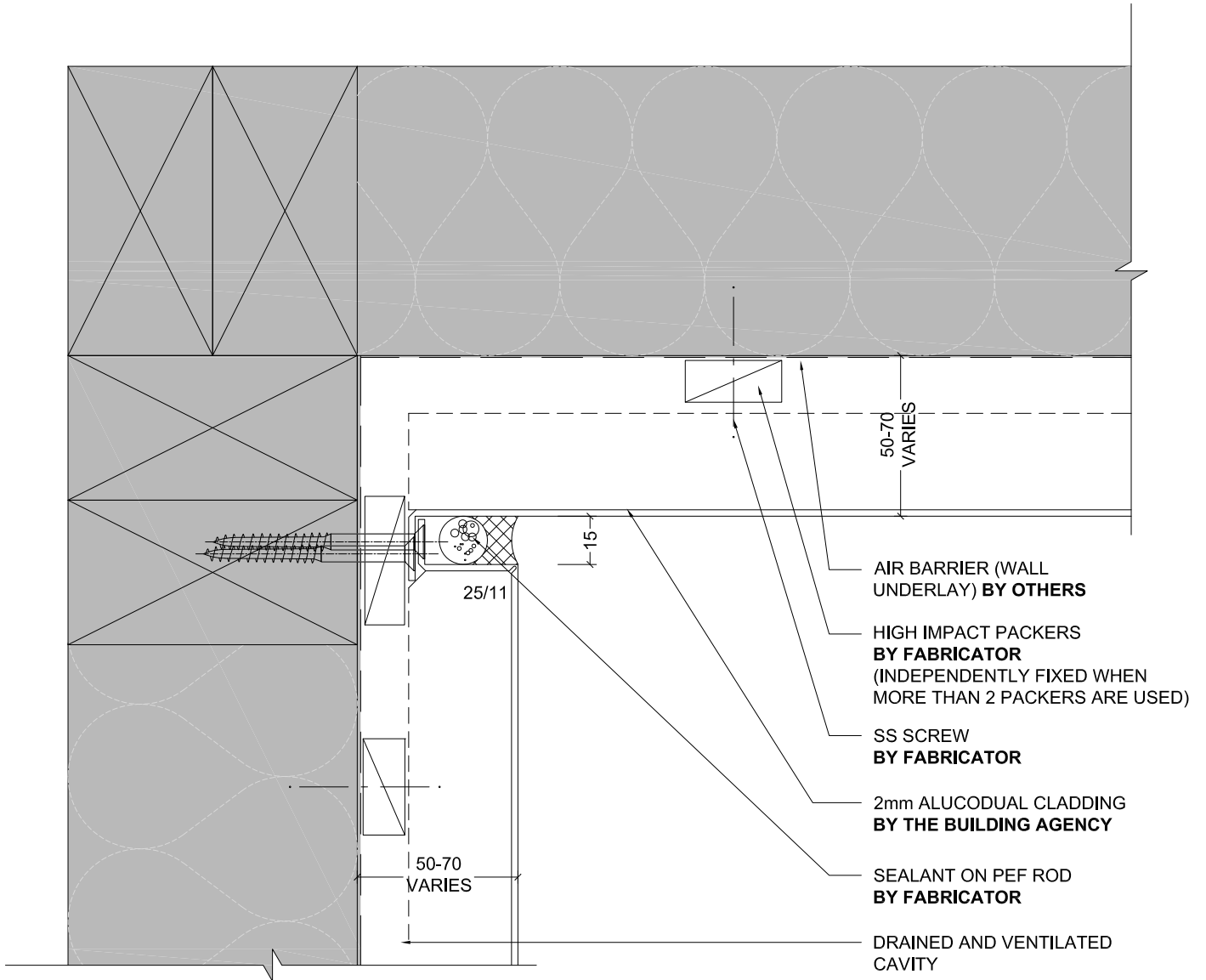
Version \_\_\_\_\_  
[v1.0]



MATERIALS • SYSTEMS • SOLUTIONS

# ALUCODUAL

R&R SYSTEM



INTERNAL  
CORNER

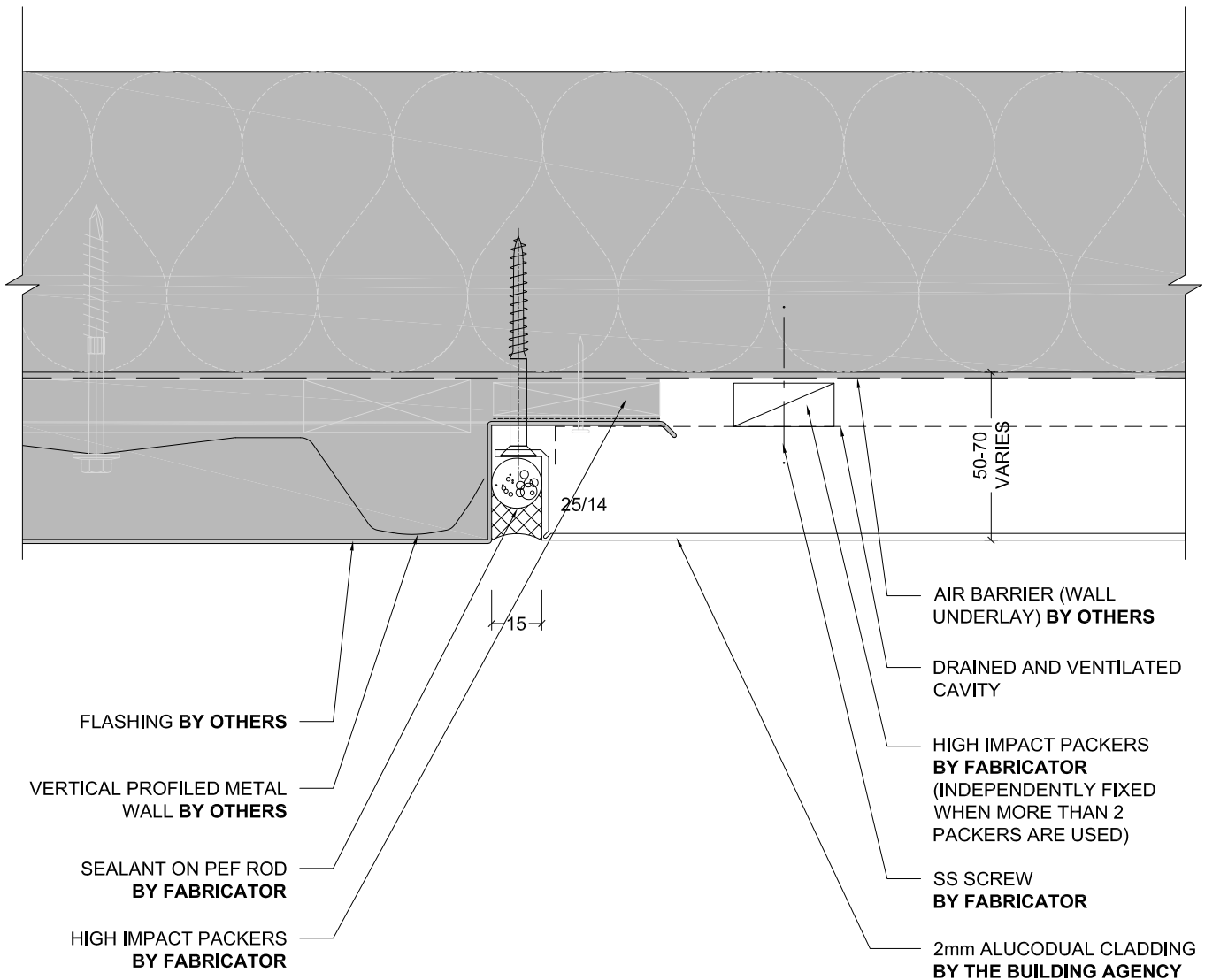
Detail Number \_\_\_\_\_  
Version \_\_\_\_\_  
[v1.0]



MATERIALS • SYSTEMS • SOLUTIONS

# ALUCODUAL

R&R SYSTEM

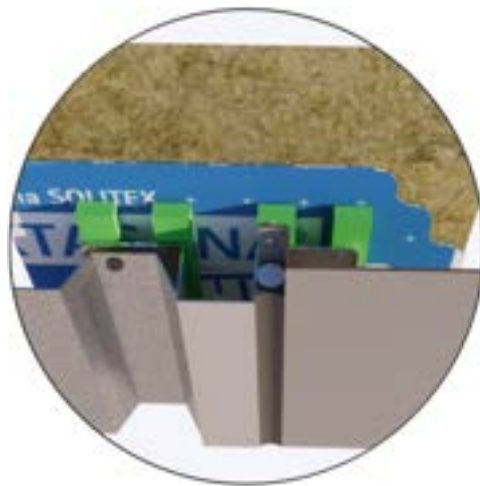
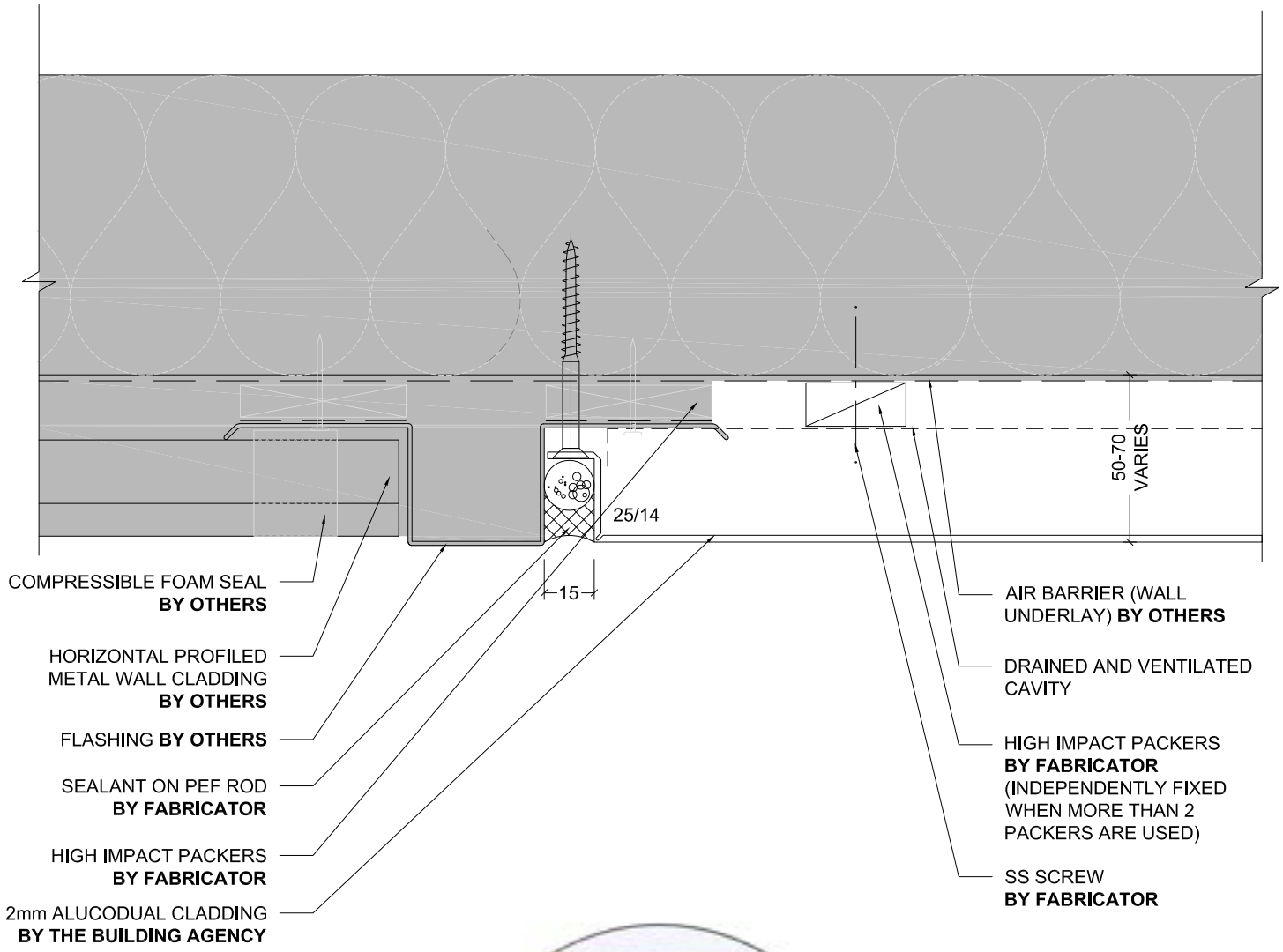


## WALL JUNCTION OP 1

Detail Number \_\_\_\_\_  
Version \_\_\_\_\_  
[v1.0]



MATERIALS • SYSTEMS • SOLUTIONS



### WALL JUNCTION OP 2

Detail Number \_\_\_\_\_  
Version \_\_\_\_\_

7.1

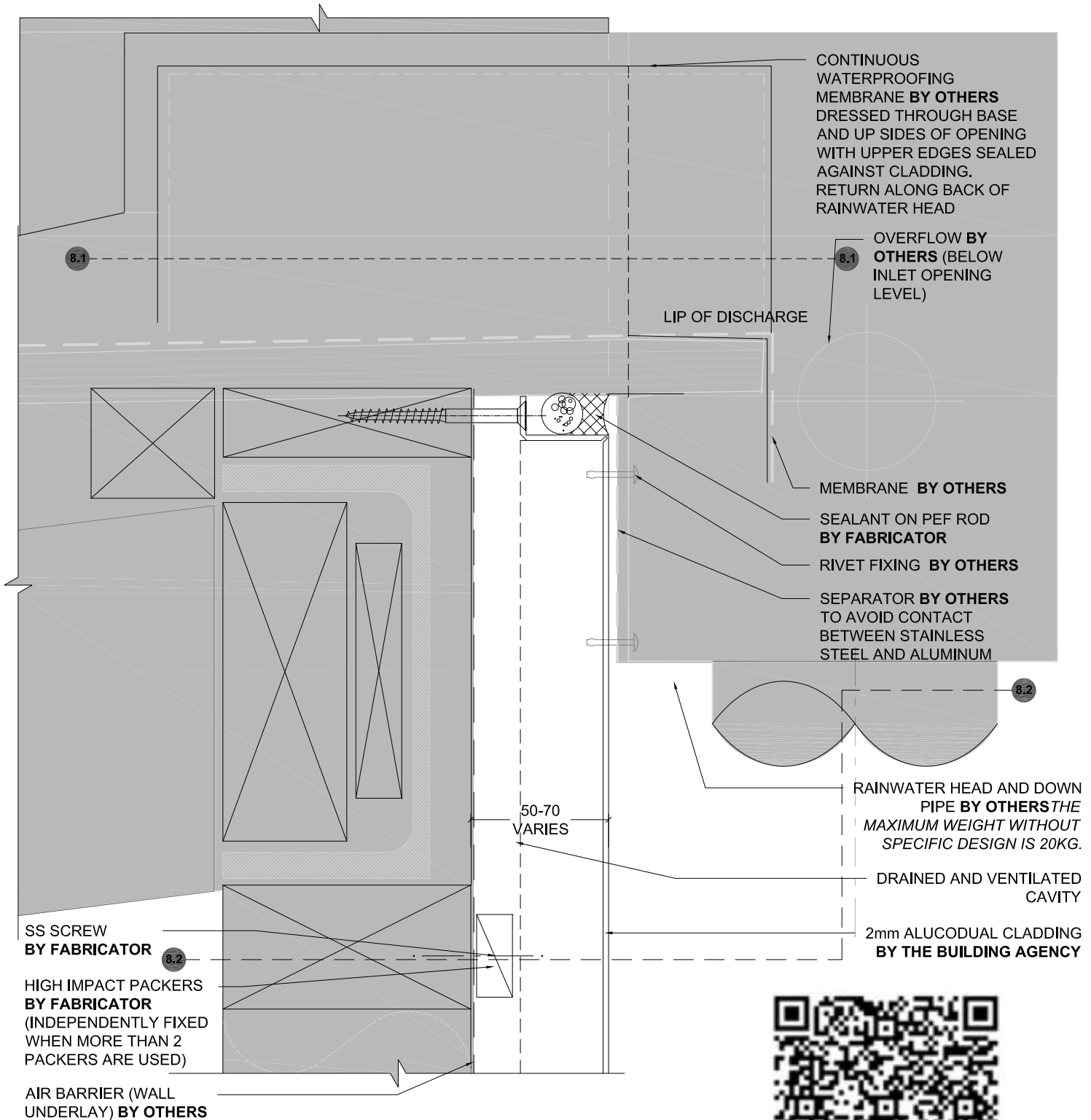
[v1.0]



MATERIALS • SYSTEMS • SOLUTIONS

# ALUCODUAL

R&R SYSTEM



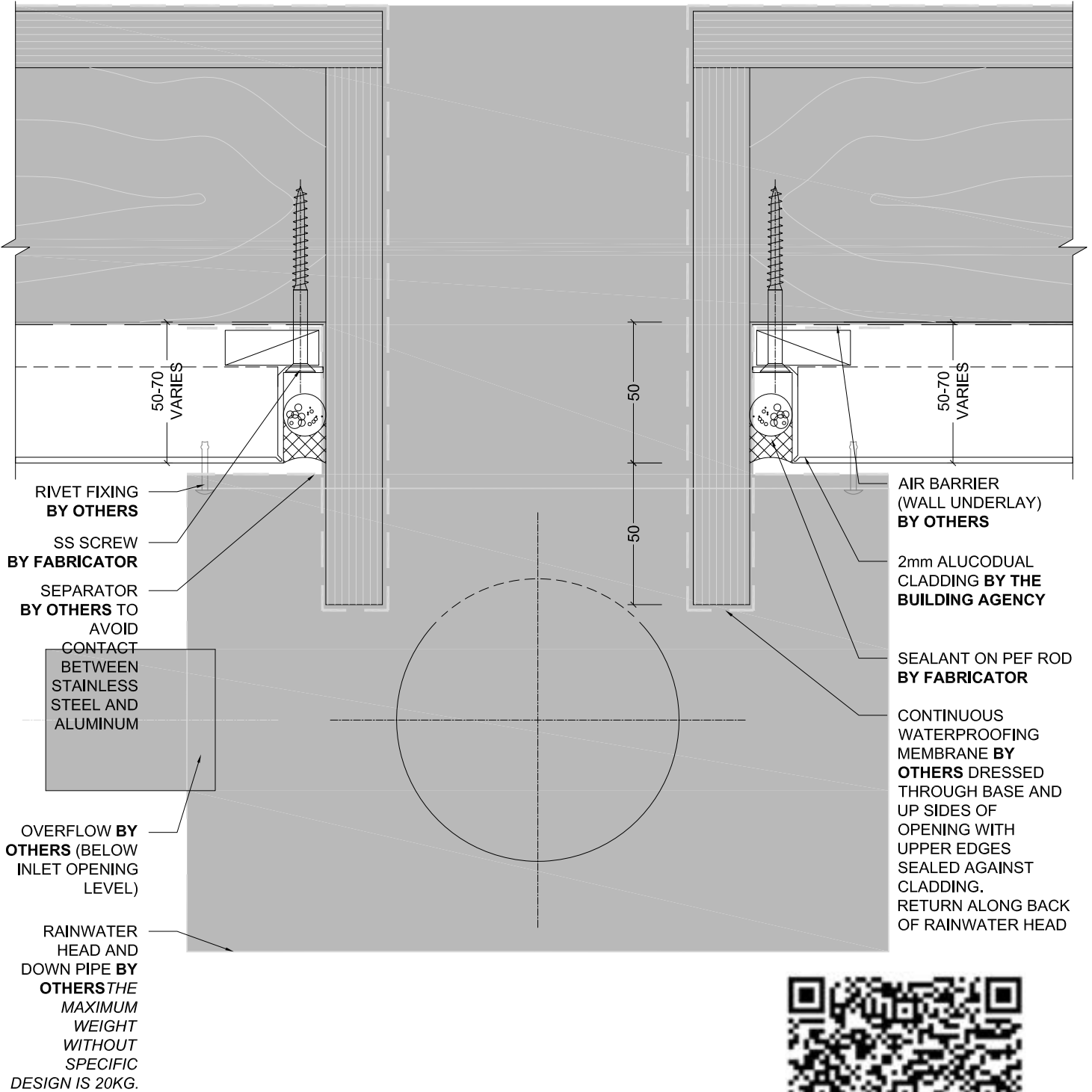
NOTE  
TO BE READ WITH SHEET 8.1 & 8.2

## RAIN HEAD / OUTLET THROUGH WALL

Detail Number \_\_\_\_\_  
Version \_\_\_\_\_  
[v1.0]



MATERIALS • SYSTEMS • SOLUTIONS



NOTE  
TO BE READ WITH SHEET 8.0 & 8.2



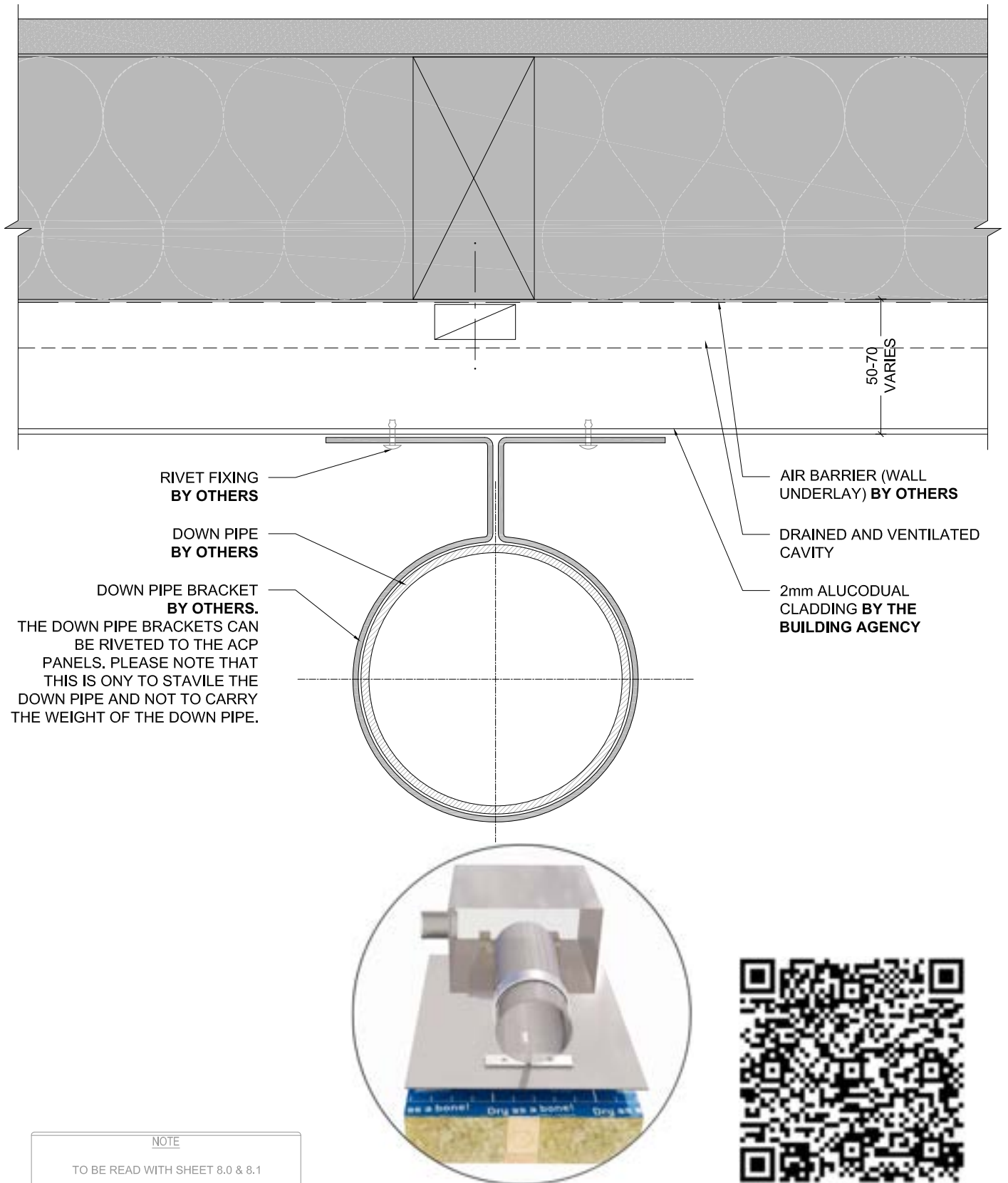
## RAIN HEAD DETAIL

Detail Number \_\_\_\_\_  
8.1

Version \_\_\_\_\_  
[v1.0]



MATERIALS • SYSTEMS • SOLUTIONS



## DOWNPIPE/ ACP FIXING DETAIL

Detail Number \_\_\_\_\_  
Version \_\_\_\_\_

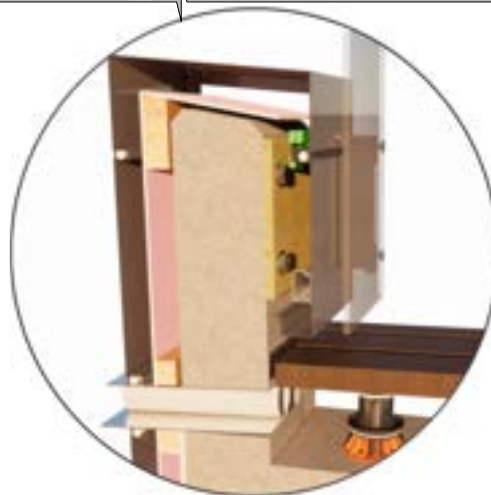
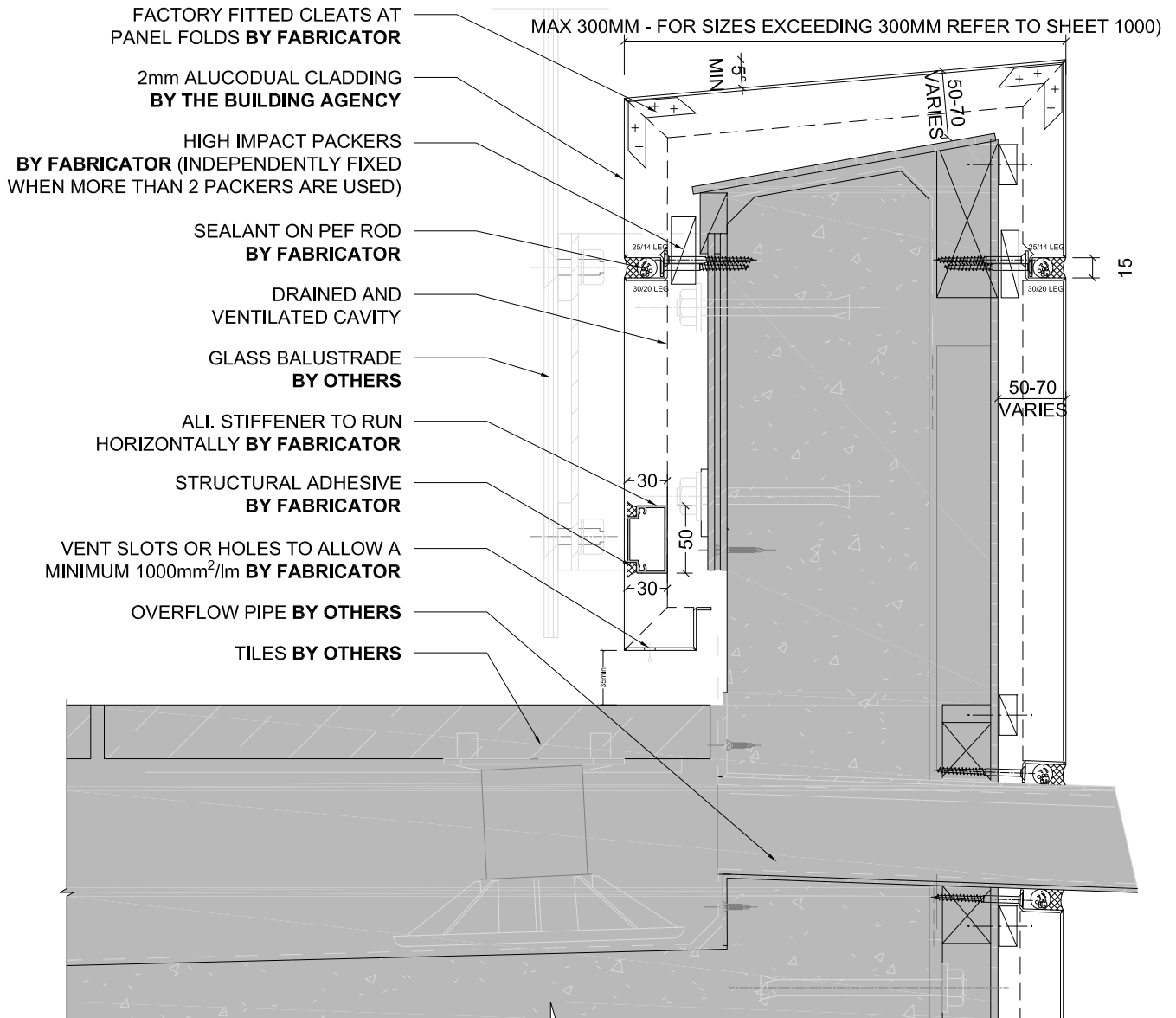
8.2

[v1.0]



MATERIALS • SYSTEMS • SOLUTIONS





**SAMPLE  
BALUSTRADE**

Detail Number \_\_\_\_\_  
Version \_\_\_\_\_

9.0

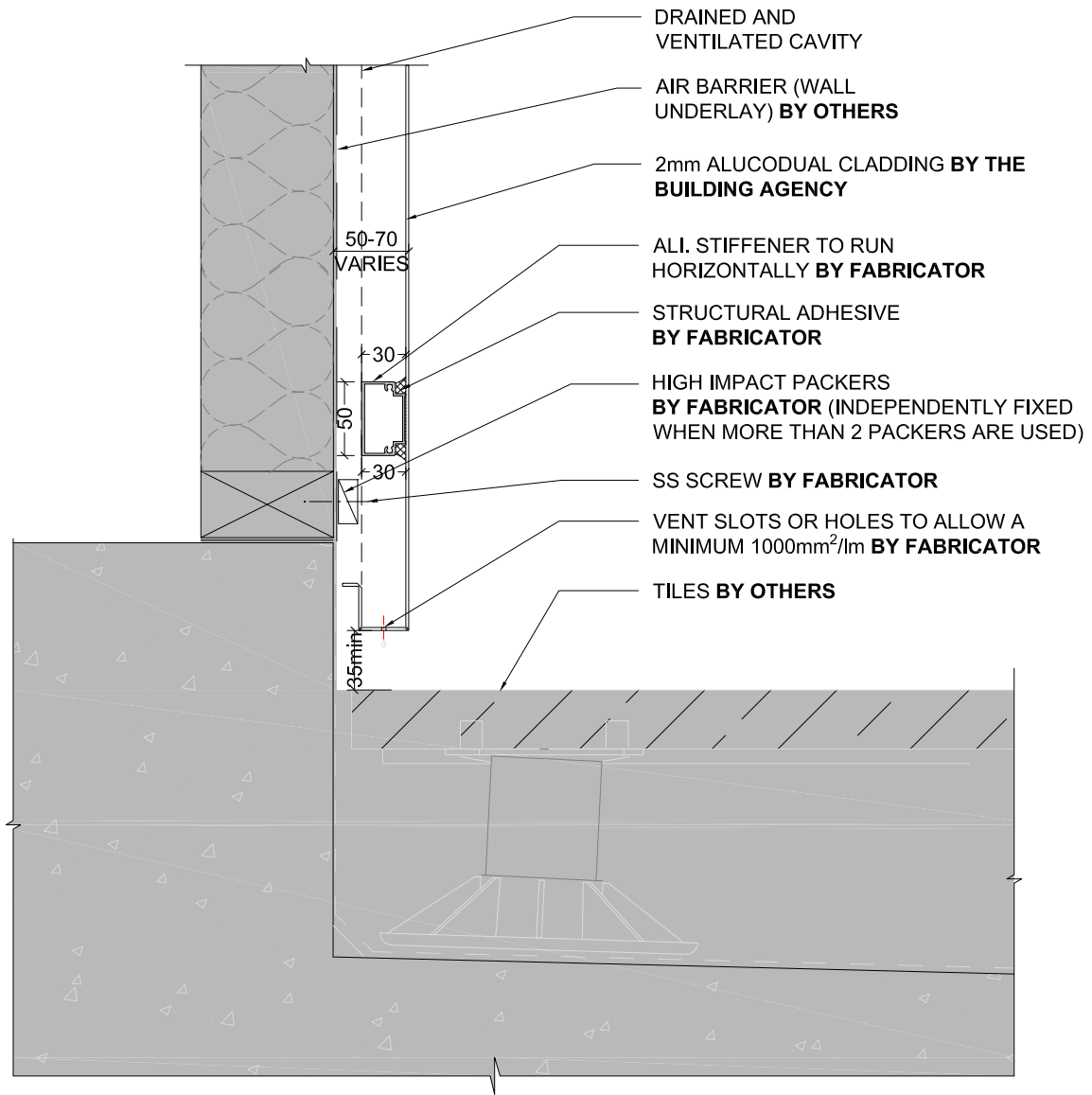
[v1.0]



**MATERIALS • SYSTEMS • SOLUTIONS**

# ALUCODUAL

R&R SYSTEM



## SAMPLE DECK DETAIL

Detail Number \_\_\_\_\_  
 Version \_\_\_\_\_  
 [v1.0]



MATERIALS • SYSTEMS • SOLUTIONS