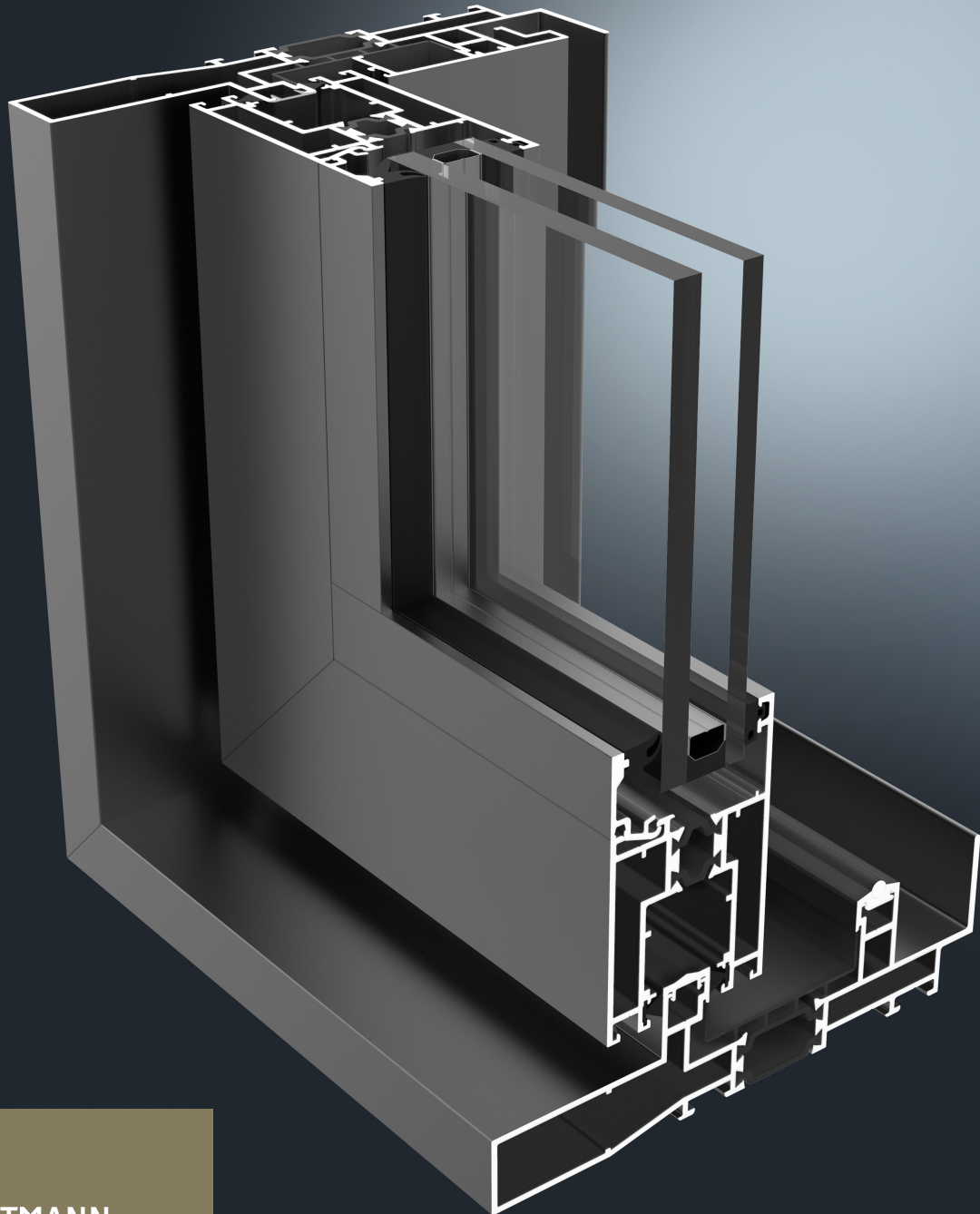




GUTMANN SC115

Sliding Door



GUTMANN
New dimensions
offer new
perspectives

ALUMINUM SHAPED BY GUTMANN



GUTMANN SC115 SLIDING DOOR

Innovative technology at its peak, with greater design and constructive flexibility

The SC115 is an elegantly designed sliding door with superior performance standards. Its thermal, air, and water performance is one of the best in the industry.

Ideal for both residential and commercial applications, the SC 115 product line has some of the best U-Values in its category. Above all, it is quick to fabricate and easy to install.

SYSTEM DESCRIPTION

- › Stable and reliable thermally broken Aluminum Slider
- › Exceptional thermal performance and high-water drainage capacity
- › Ideal for residential and commercial applications
- › High structural performance capabilities
- › Sash sizes up to 118" (3000mm) wide and height up to 118" (3000mm)
- › Frame depth of 6 3/8" (162mm) for double track with polyamide thermal barrier and low sash height of 2" (50mm)
- › Available in double or triple-track systems depending on desired configuration
- › Symmetrical profile design for uniform accessory parts in the inner and outer panels
- › Large size capabilities with maximum weight per sash of 441 lbs (200 kgs)
- › Accommodates 1" to 1 13/50" (25.4mm - 32mm) double glazed sealed units
- › Both dry and wet glazed options are available
- › Hardware with multi-point locking and GUTMANN special design
- › Sturdy corner-blocked and crimped sash construction
- › Incorporates interior insect screen
- › High sound attenuation
- › Simple and fast installation process
- › Finishes available in a variety of standard and custom colours
- › Tested to NAF2011- AW-PG65 Performance Class

SYSTEM PROPERTIES

Specimen Size: 122" x 118" (3100mm x 3000mm)



Canadian Air infiltration /Exfiltration

ASTM E283 - 04

A2 Level



Water Penetration

ASTM E547-00

620 Pa (13.03 PSF) - No leakage - Prior to, After Cycling and After Design Load



Uniform Load Structural Test Pressure

ASTM E330-14

+/-4320 Pa (+/- 90.23 PSF)



Design Pressure

ASTM E330-14

+/-2880 Pa (+/- 60.15 PSF)



Forced Entry Resistance

ASTM F842-14

Grade 10 Pass



Operating Force

ASTM E2068

111N (25lbf)



Air Leakage

ASTM E283-04

0.04 cfm/ft2 -Prior to the cycles

0.13 cfm/ft2 -After cycling

0.10 cfm/ft2 - Allowed @ 6.27 PSF

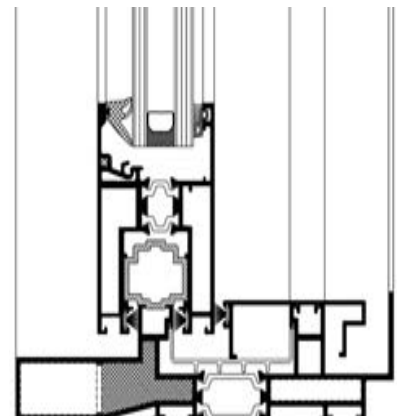
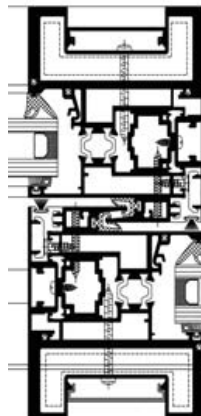
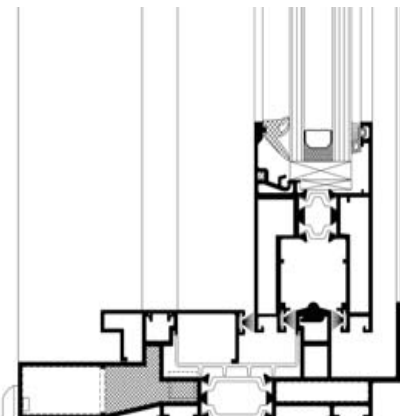


Thermal Transmittance (U-Factor)

NFRC 100

The average weighted system "U" value for the wall assembly shall not exceed 0.43Btu/hr/ft2-F° . This value may vary according to glass selection and framing configuration.

SYSTEM CROSS-SECTION





GUTMANN
Innovative
technology
at the
highest level

**BECOME A GUTMANN PARTNER AND
ENJOY THE FOLLOWING ADVANTAGES:**

- › Many years of experience and expertise in façade business
- › We offer you everything from a single source: structural engineering advice in design and planning phase of a building, as well as support in the implementation of existing system technology with special system-based solutions
- › Top quality products are our trademark and basis of our reputation
- › High storage capacity and efficient logistics ensure fast and punctual delivery
- › Maximum customer benefit characterized by a successful combination of sophisticated design, certified safety, and sustainable profitability



GUTMANN NORTH AMERICA
Suite 200, 2020 Winston Park Dr
Oakville, ON, L6H 6X7, Canada
T: (416) 488 6266

www.gutmann-na.com